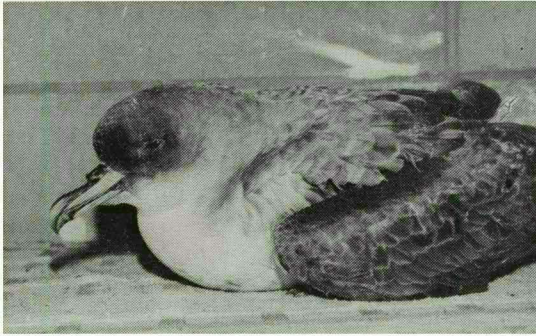


## BIRD NOTES

**A GREY PETREL FROM SOUTHERN EYRE PENINSULA** — Earlier in this issue, Robinson has mentioned the first and second records of the Grey Petrel for South Australia, and has given details of a third. Presented here are details of the fourth State record of this species.



*Grey Petrel found near Sleaford Bay*

On the morning of May 31, 1978, a live Grey Petrel was brought to me. It had been found the night before about half a kilometre inland by the side of the Sleaford Bay road. It had a broken leg but was still quite lively. It brightened up more after being force-fed a mixture of glucose and squid, but died the next day, possibly from heat exhaustion, the weather having turned quite warm. The weather pattern for May 29 and 30 was a strong southerly wind coming from deep in the southern ocean, which presumably carried the bird into Sleaford Bay.

The body was forwarded to the South Australian Museum, where it was prepared as a study skin, registered number B 31543. The bird, a male with testes slightly enlarged, was in quite fresh plumage, with total length 470 mm, wingspan 1205 mm, wing-length 334 mm, tail 117 mm, tarsus 53 mm, and exposed culmen 45 mm. — C. GILL.

Accepted October, 1978