



**Checklist for
MOUNT COMPASS SCHOOL SWAMP**

Latitude -35.35377 °N Longitude 138.62 °E

Latitude 35°21'13" S Longitude 138°37'12" E UTM 54 283739 6085124

Observers:	Phone: (H) (M)
.....	Email:

Date: Start Time: End Time:

Codes (leave blank for Present)

D = Dead	H = Heard	O = Overhead	B = Breeding	B1 = Mating
B2 = Nest Building	B3 = Nest with eggs	B4 = Nest with chicks	B5 = Dependent fledglings	B6 = Bird on nest

NON-PASSERINES			NON-PASSERINES			PASSERINES		
	Code	No.		Code	No.		Code	No.
Maned Duck						Superb Fairywren		
Freckled Duck						Southern Emuwren		
Pacific Black Duck						Eastern Spinebill		
Grey Teal						Crescent Honeyeater		
Chestnut Teal						New Holland Honeyeater		
Australian White Ibis						White-naped Honeyeater		
Straw-necked Ibis						White-fronted Chat		
Cattle Egret						Little Wattlebird		
White-necked Heron						Red Wattlebird		
White-faced Heron						Yellow-faced Honeyeater		
Eastern Great Egret (Great Egret)						Noisy Miner		
Little Pied Cormorant						White-plumed Honeyeater		
Black-shouldered Kite						Striated Pardalote		
Wedge-tailed Eagle						White-browed Scrubwren		
Collared Sparrowhawk						Weebill		
Dusky Moorhen						Brown Thornbill		
Spur-winged Plover (Masked Lapwing)						Yellow-rumped Thornbill		
Latham's Snipe						Striated Thornbill		
Silver Gull						Australian Magpie		
*Feral Pigeon						Black-winged Currawong (Grey Currawong)		
*Spotted Dove						Black-faced Cuckooshrike		
Common Bronzewing						Australian Golden Whistler		
Crested Pigeon						Rufous Whistler		
Horsfield's Bronze Cuckoo						Grey Shrikethrush		
Shining Bronze Cuckoo						Willie Wagtail		
Laughing Kookaburra						Grey Fantail		
Sacred Kingfisher						Magpie-lark		
Nankeen Kestrel						Little Raven		
Brown Falcon						Flame Robin		
Cockatiel						*Eurasian Skylark		
Yellow-tailed Black Cockatoo						Brown Songlark		
Galah						Australian Reed Warbler		
Little Corella						Welcome Swallow		
Sulphur-crested Cockatoo						Tree Martin		
Red-rumped Parrot						Little Grassbird		
Adelaide Rosella (Crimson Rosella)						Golden-headed Cisticola		
Eastern Rosella						Silvereye		
Elegant Parrot						*Common Starling		
Purple-crowned Lorikeet						*Common Blackbird		
Rainbow Lorikeet						Mistletoebird		
Musk Lorikeet						*House Sparrow		
						Red-browed Finch		
						*European Goldfinch		
						*European Greenfinch		

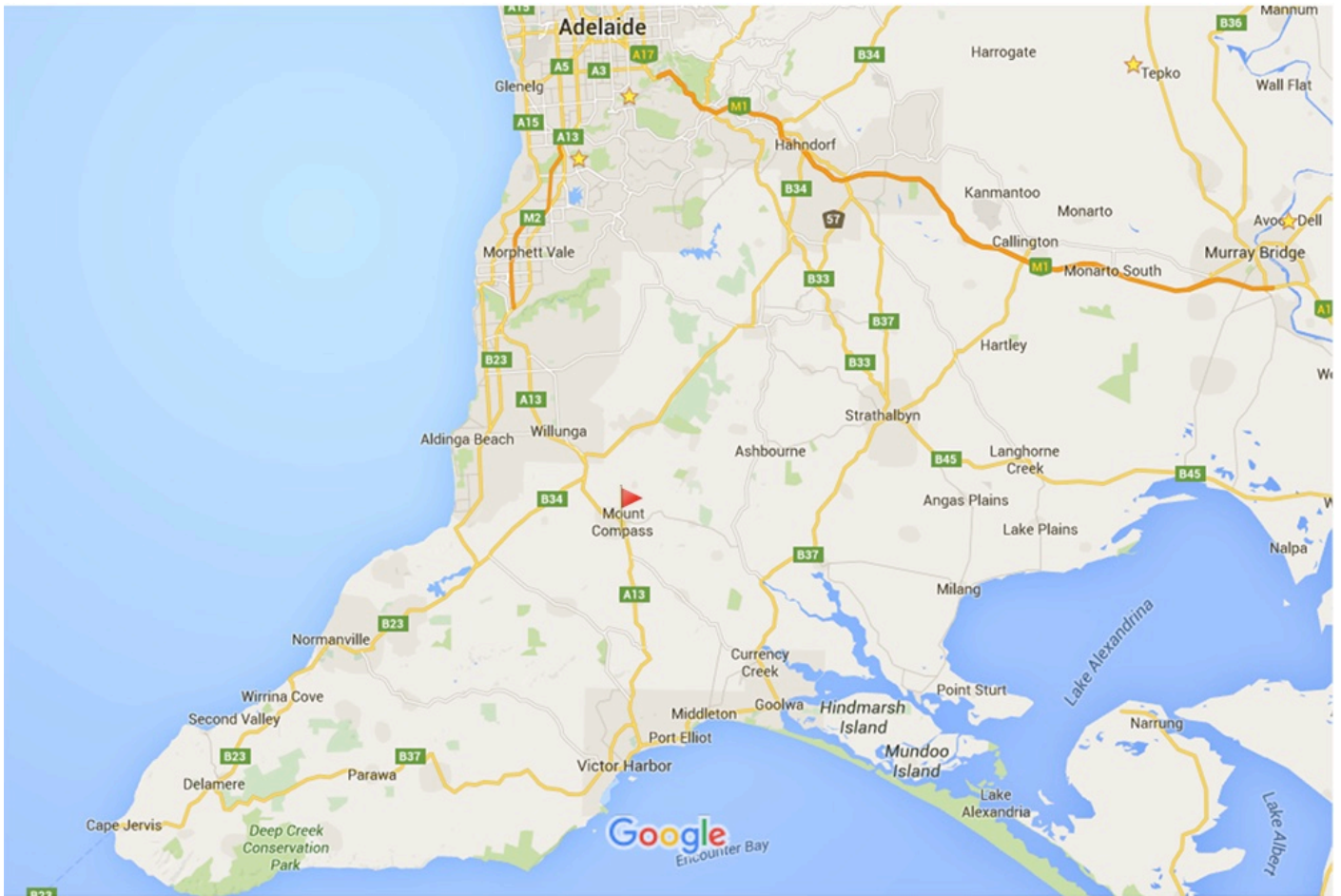
If Species in **BOLD** are seen a "Rare Bird Record Report" should be submitted.

IT IS IMPORTANT THAT ONLY BIRDS SEEN WITHIN THE PARK ARE RECORDED ON THIS LIST. IF YOU SEE BIRDS OUTSIDE THE PARK PLEASE MARK ACCORDINGLY OR PREFERABLY USE A SEPARATE LIST.

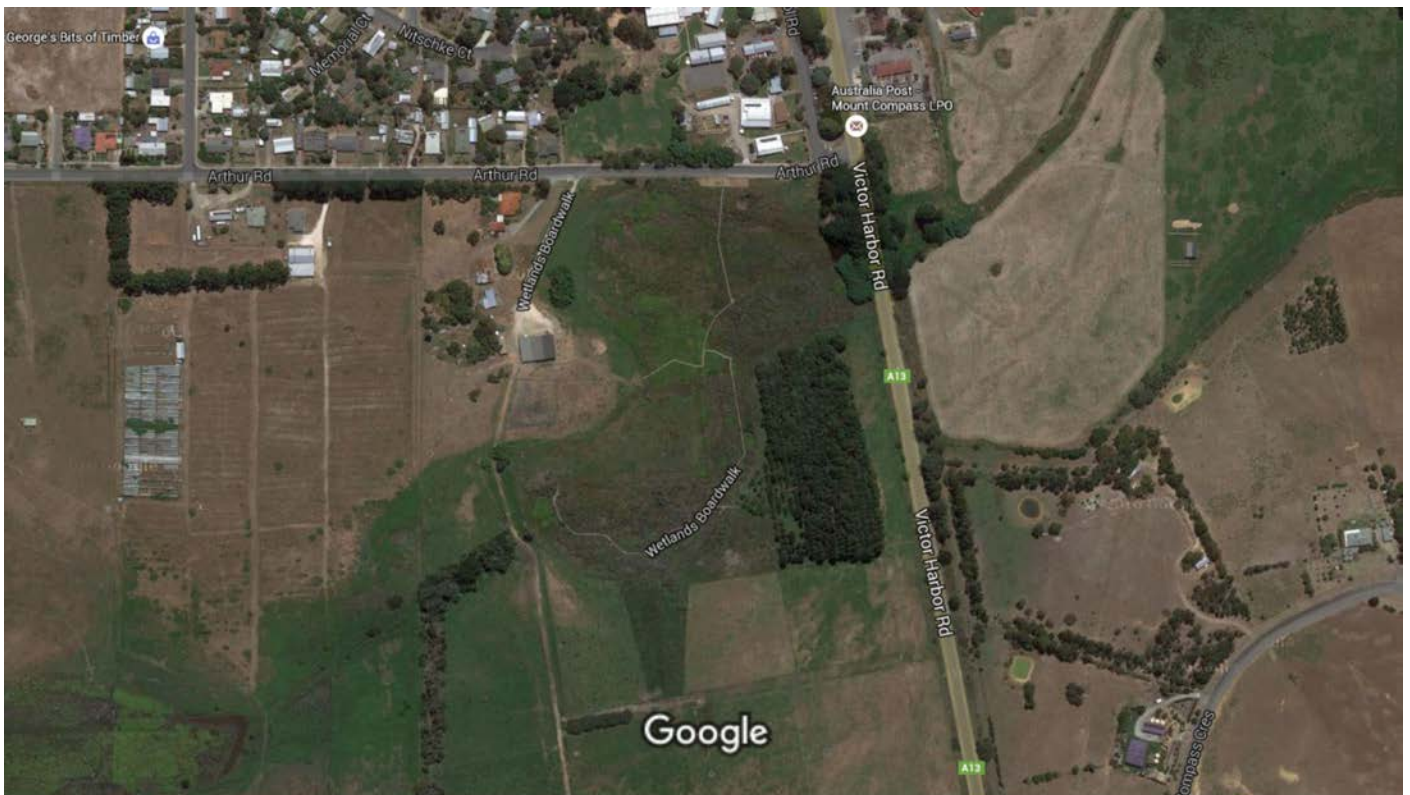
Please return this sheet on completion to Birds SA Database Co-ordinator (Brian Blaylock) for inclusion in the database.

Email to: secretary@birdssa.asn.au or post to: Birds SA c/- SA Museum, North Terrace, Adelaide, SA, 5000

MOUNT COMPASS SCHOOL SWAMP



Map data ©2016 Google 10 km



Imagery ©2016 Aerometrex, CNES / Astrium, DigitalGlobe, Fleurieu Councils/AMX, Map data ©2016 Google 100 m