



**Checklist for
MOUNT MAGNIFICENT CONSERVATION PARK**

Latitude -35.30760 °N Longitude 138.68055 °E
 Latitude 35°18'27" S Longitude 138°40'50" E UTM 54 289122 6090377

Observers: Phone: (H) (M)
 Email:

Date: Start Time: End Time:

Codes (leave blank for Present)

D = Dead	H = Heard	O = Overhead	B = Breeding	B1 = Mating
B2 = Nest Building	B3 = Nest with eggs	B4 = Nest with chicks	B5 = Dependent fledglings	B6 = Bird on nest

NON-PASSERINES	Code	No.	PASSERINES	Code	No.	PASSERINES	Code	No.
Maned Duck			White-throated Treecreeper			Mistletoebird		
Pacific Black Duck			Superb Fairywren			*House Sparrow		
Grey Teal			Eastern Spinebill			Australian Pipit		
Australasian Grebe			New Holland Honeyeater			Red-browed Finch		
Australian White Ibis			Crescent Honeyeater			*European Goldfinch		
Straw-necked Ibis			Brown-headed Honeyeater					
White-necked Heron			White-naped Honeyeater					
Eastern Great Egret (Great Egret)			Little Wattlebird					
White-faced Heron			Red Wattlebird					
Little Pied Cormorant			Yellow-faced Honeyeater					
Pied Cormorant			Noisy Miner					
Black-shouldered Kite			Yellow-plumed Honeyeater					
Wedge-tailed Eagle			Spotted Pardalote					
Brown Goshawk			Striated Pardalote					
Spotted Harrier			White-browed Scrubwren					
Whistling Kite			Weebill					
Eurasian Coot			Brown Thornbill					
Painted Buttonquail			Buff-rumped Thornbill					
Spur-winged Plover (Masked Lapwing)			Yellow-rumped Thornbill					
*Feral Pigeon			Yellow Thornbill					
*Spotted Dove			Striated Thornbill					
Common Bronzewing			Masked Woodswallow					
Brush Bronzewing			White-browed Woodswallow					
Crested Pigeon			Dusky Woodswallow					
Horsfield's Bronze Cuckoo			Australian Magpie					
Pallid Cuckoo			Black-winged Currawong (Grey Currawong)					
Fan-tailed Cuckoo			Black-faced Cuckooshrike					
Australian Owlet-nightjar			Black-capped Sittella (Varied Sittella)					
Laughing Kookaburra			Eastern Shrikeitit (Crested Shrikeitit)					
Rainbow Bee-eater			Australian Golden Whistler					
Nankeen Kestrel			Rufous Whistler					
Brown Falcon			Grey Shrike-thrush					
Peregrine Falcon			Willie Wagtail					
Yellow-tailed Black Cockatoo			Grey Fantail					
Galah			Magpie-lark					
Red-rumped Parrot			Little Raven					
Adelaide Rosella (Crimson Rosella)			Flame Robin					
Elegant Parrot			Scarlet Robin					
Purple-crowned Lorikeet			*Eurasian Skylark					
Rainbow Lorikeet			Welcome Swallow					
Musk Lorikeet			Tree Martin					
			Silvereye					
			*Common Starling					
			Bassian Thrush					
			*Common Blackbird					

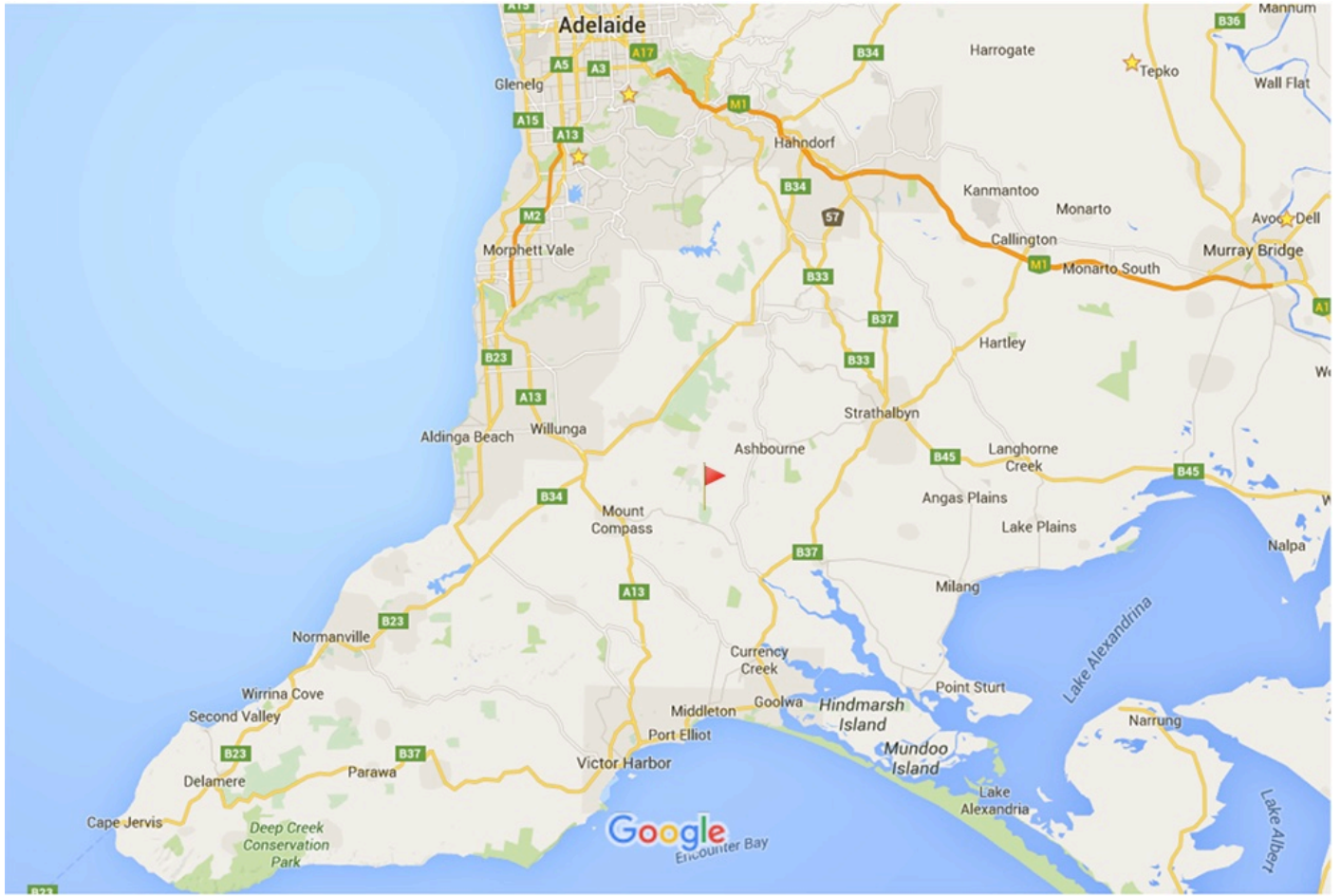
If Species in **BOLD** are seen a "Rare Bird Record Report" should be submitted.

IT IS IMPORTANT THAT ONLY BIRDS SEEN WITHIN THE PARK ARE RECORDED ON THIS LIST. IF YOU SEE BIRDS OUTSIDE THE PARK PLEASE MARK ACCORDINGLY OR PREFERABLY USE A SEPARATE LIST.

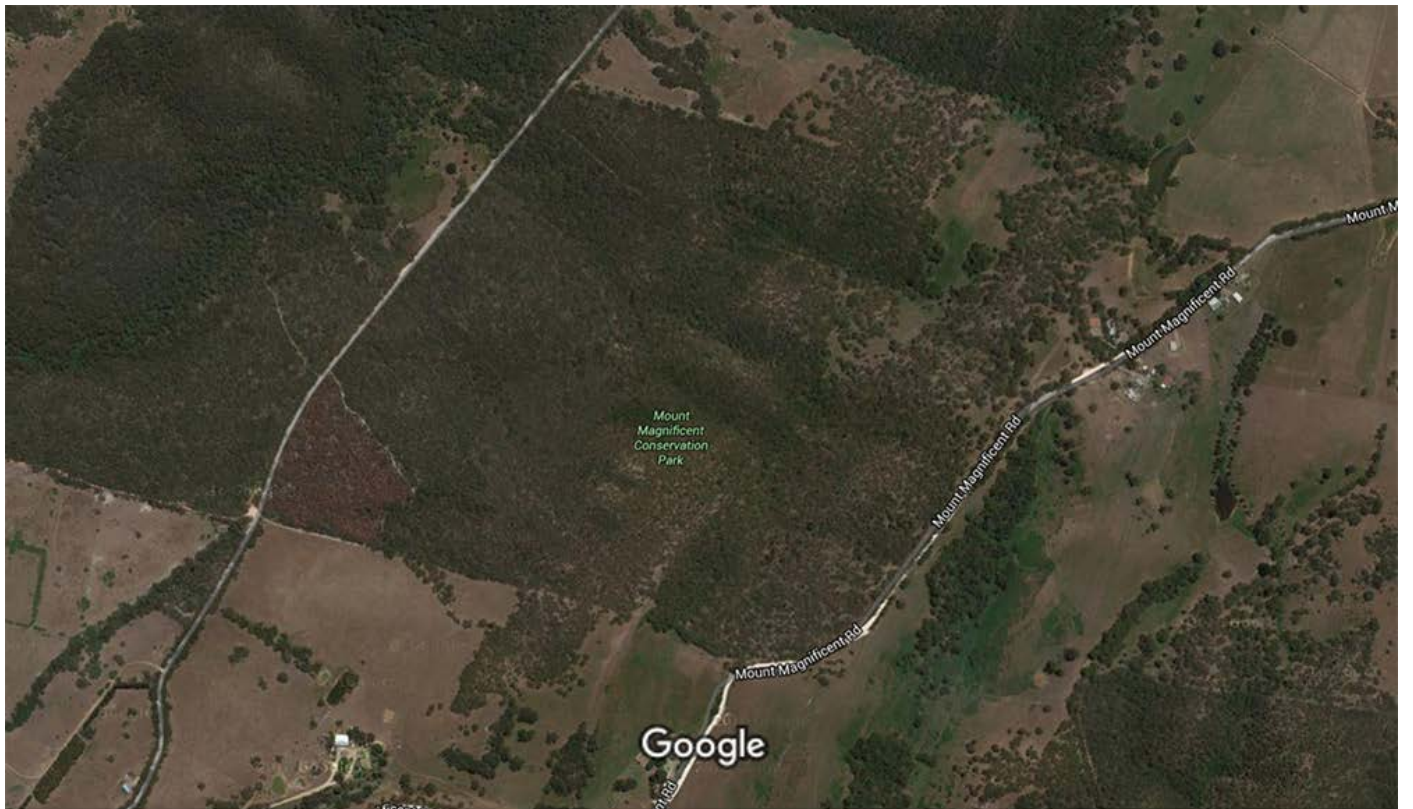
Please return this sheet on completion to Birds SA Database Co-ordinator (Brian Blaylock) for inclusion in the database.

Email to: secretary@birdssa.asn.au or post to: Birds SA c/- SA Museum, North Terrace, Adelaide, SA, 5000

MOUNT MAGNIFICENT CONSERVATION PARK



Map data ©2016 Google 10 km



Imagery ©2016 Aerometrex, CNES / Astrium, Cnes/Spot Image, DigitalGlobe, Map data ©2016 Google 200 m