 Birds SA birdssa.asn.au	Checklist for		
	MUDLA WIRRA RESERVE (PENGILLY SCRUB), WASLEYS		
-34.50285 °N 138.70504 °E or new	34°30'10" S 138°42'18" E	54 289302 6179696	
Observers:	Phone: (H) (M)		
.....	Email:		
Date:	Start Time:	End Time:	

Codes (leave blank for Present)

D = Dead	H = Heard	O = Overhead	B = Breeding	B1 = Mating
B2 = Nest Building	B3 = Nest with eggs	B4 = Nest with chicks	B5 = Dependent fledglings	B6 = Bird on nest

NON-PASSERINES	Code	No.	NON-PASSERINES	Code	No.	PASSERINES	Code	No.
Stubble Quail						Brown Treecreeper		
Black-shouldered Kite						Spiny-cheeked Honeyeater		
Little Eagle						White-fronted Chat		
Wedge-tailed Eagle						Red Wattlebird		
Brown Goshawk						Yellow-throated Miner		
Spotted Harrier						Singing Honeyeater		
Painted Buttonquail						White-plumed Honeyeater		
Little Buttonquail						Spotted Pardalote		
*Feral Pigeon						Striated Pardalote		
*Spotted Dove						White-browed Babbler		
Common Bronzewing						Masked Woodswallow		
Crested Pigeon						White-browed Woodswallow		
Peaceful Dove						Dusky Woodswallow		
Horsfield's Bronze Cuckoo						Black-faced Woodswallow		
Eastern Barn Owl						Australian Magpie		
Tawny Frogmouth						Black-faced Cuckooshrike		
Spotted Nightjar						White-winged Triller		
Australian Owllet-nightjar						Rufous Whistler		
Pacific Swift						Grey Shrikethrush		
Red-backed Kingfisher						Willie Wagtail		
Rainbow Bee-eater						Grey Fantail		
Brown Falcon						Magpie-lark		
Peregrine Falcon						Restless Flycatcher		
Cockatiel						Australian Raven		
Galah						Little Raven		
Adelaide Rosella (Crimson Rosella)						Horsfield's Bushlark		
Red-rumped Parrot						*Eurasian Skylark		
Blue-winged Parrot						Welcome Swallow		
Elegant Parrot						Tree Martin		
Purple-crowned Lorikeet						Rufous Songlark		
Musk Lorikeet						Brown Songlark		
Budgerigar						*Common Starling		
						*House Sparrow		
						Australian Pipit		

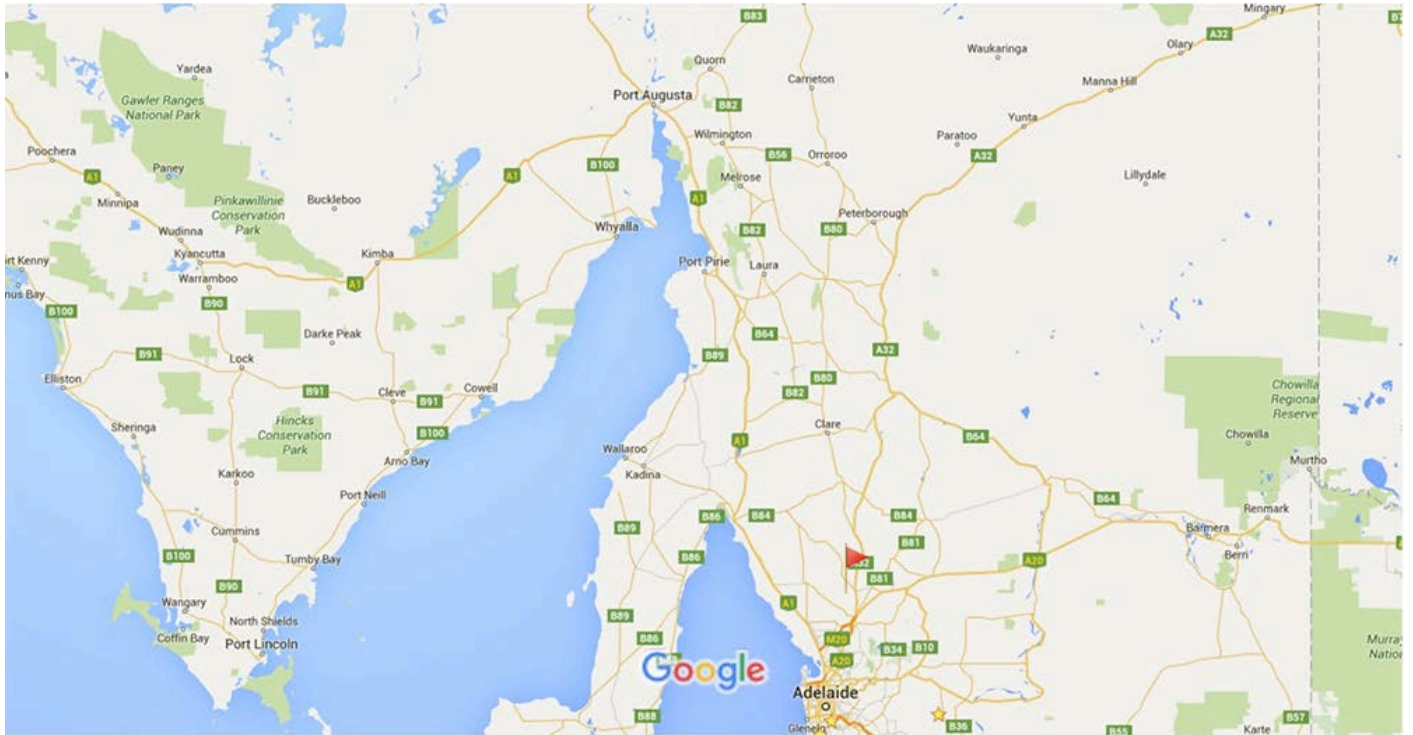
If Species in **BOLD** are seen a "Rare Bird Record Report" should be submitted.

IT IS IMPORTANT THAT ONLY BIRDS SEEN WITHIN THE PARK ARE RECORDED ON THIS LIST. IF YOU SEE BIRDS OUTSIDE THE PARK PLEASE MARK ACCORDINGLY OR PREFERABLY USE A SEPARATE LIST.

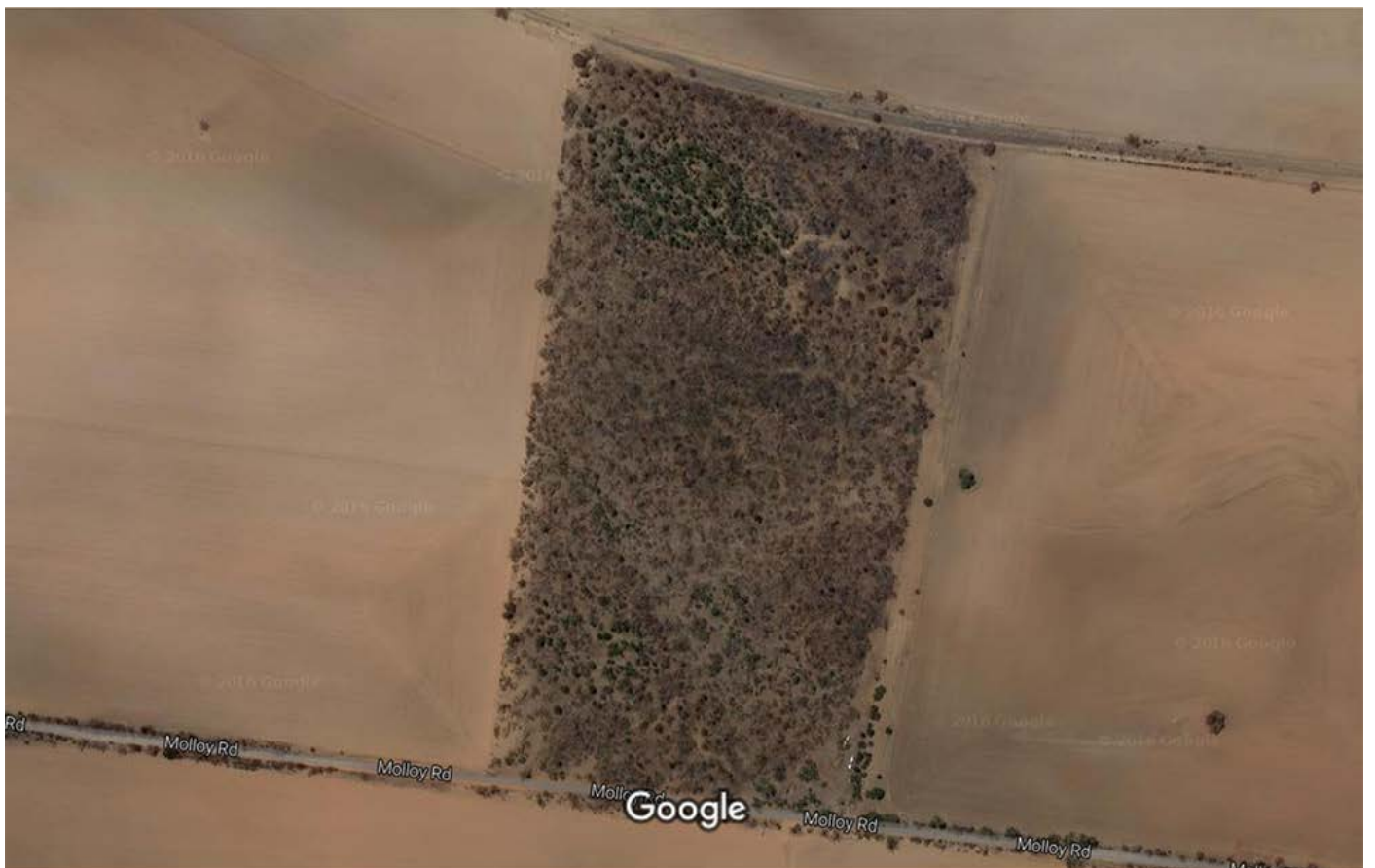
Please return this sheet on completion to Birds SA Database Co-ordinator (Brian Blaylock) for inclusion in the database.

Email to: secretary@birdssa.asn.au or post to: Birds SA c/- SA Museum, North Terrace, Adelaide, SA, 5000

MUDLA WIRRA RESERVE (PENGILLY SCRUB), WASLEYS



Map data ©2016 Google 50 km



Imagery ©2016 Aerometrex, CNES / Astrium, DigitalGlobe, Map data ©2016 Google 100 m