



Checklist for MYLOR CONSERVATION PARK

Latitude -35.03765 °N Longitude 138576922 °E
Latitude 35°02'15" S Longitude 138°46'09" E UTM 54 296513 6120507

Observers:

Phone: (H) (M)
Email:

Date: Start Time: End Time:

Codes (leave blank for Present)

Legend table with columns: D = Dead, H = Heard, O = Overhead, B = Breeding, B1 = Mating, B2 = Nest Building, B3 = Nest with eggs, B4 = Nest with chicks, B5 = Dependent fledglings, B6 = Bird on nest

Main checklist table with columns for species names, Code, and No. for three groups: NON-PASSERINES, NON-PASSERINES, and PASSERINES

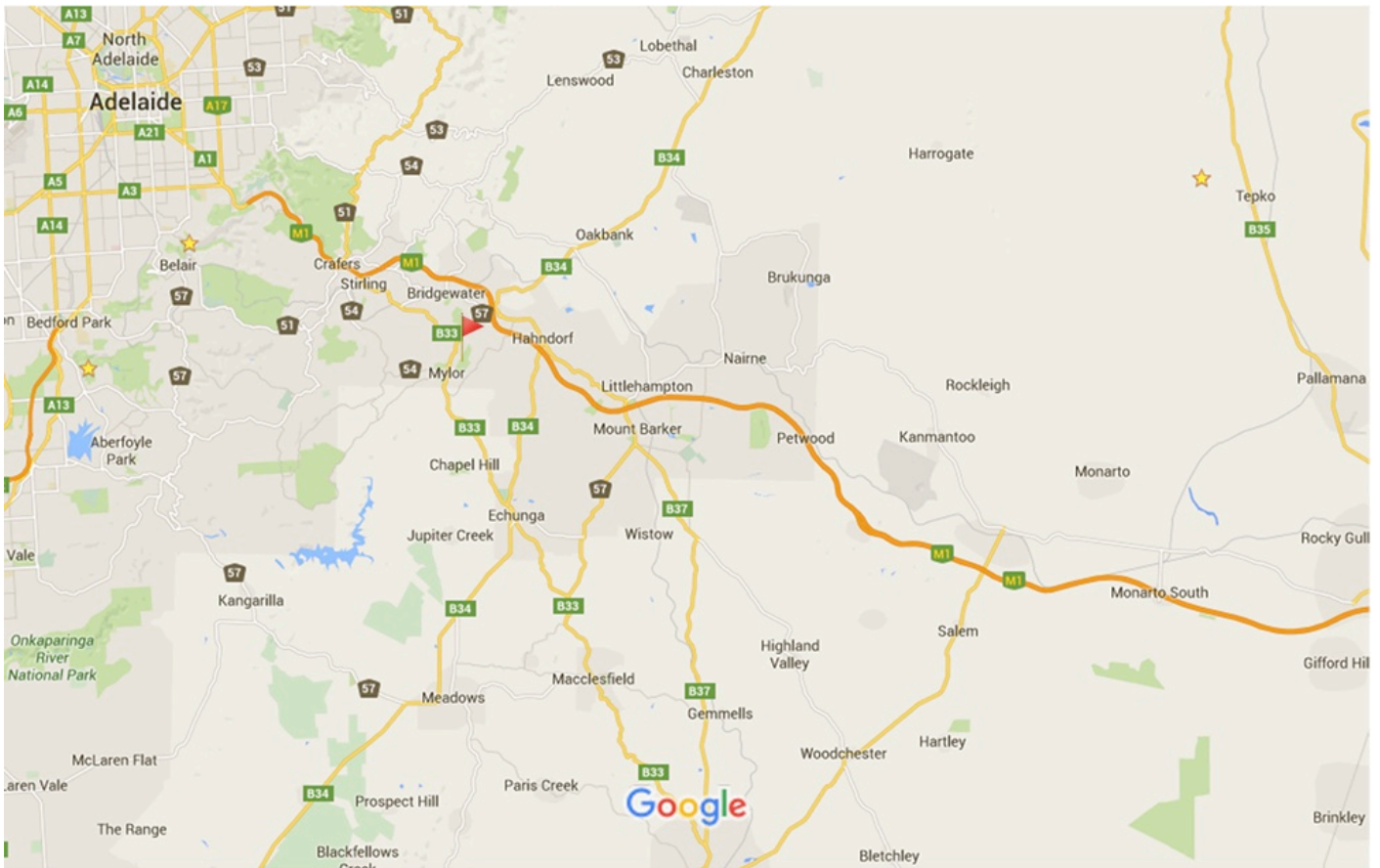
If Species in BOLD are seen a "Rare Bird Record Report" should be submitted.

IT IS IMPORTANT THAT ONLY BIRDS SEEN WITHIN THE PARK ARE RECORDED ON THIS LIST. IF YOU SEE BIRDS OUTSIDE THE PARK PLEASE MARK ACCORDINGLY OR PREFERABLY USE A SEPARATE LIST.

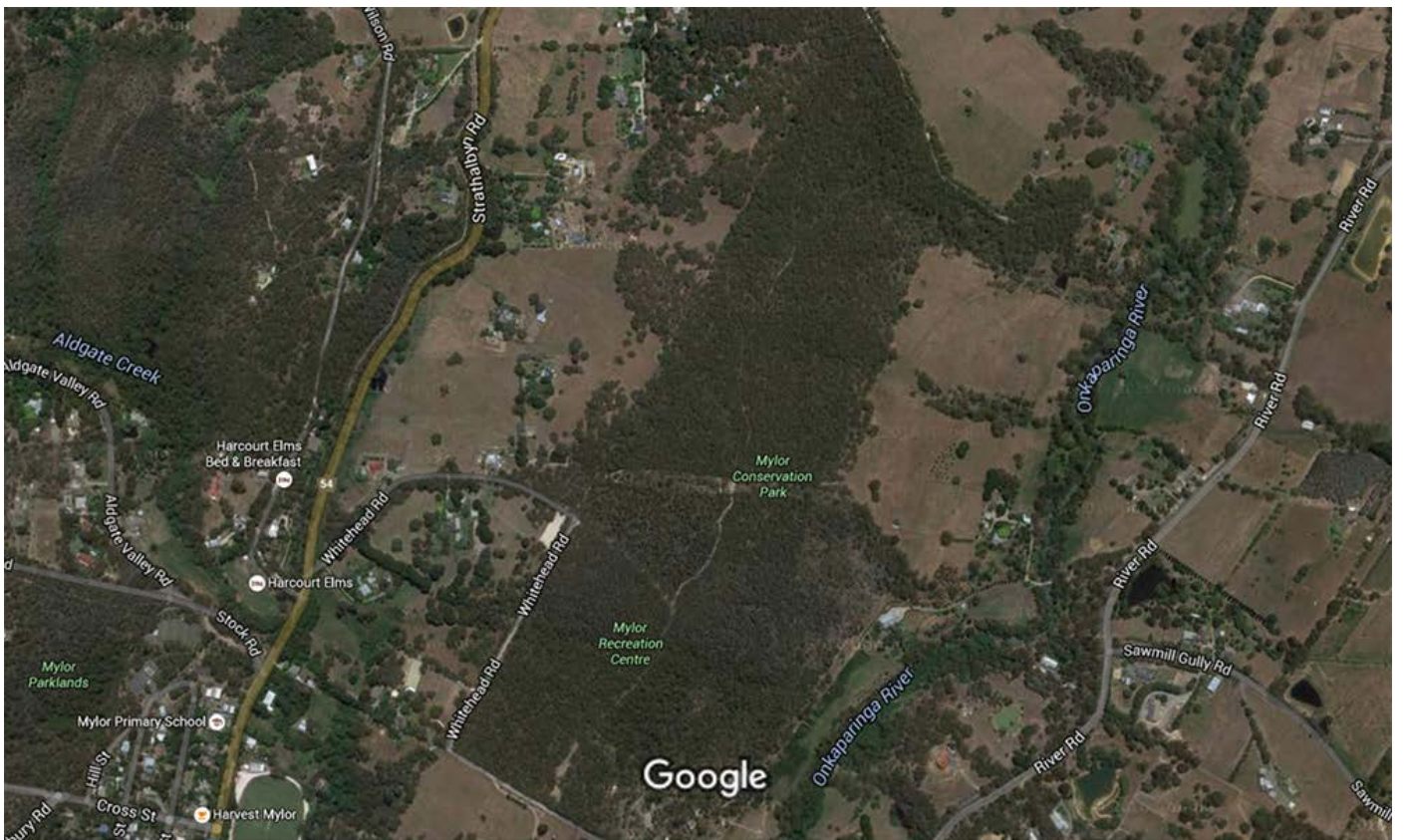
Please return this sheet on completion to Birds SA Database Co-ordinator (Brian Blaylock) for inclusion in the database.

Email to: secretary@birdssa.asn.au or post to: Birds SA c/- SA Museum, North Terrace, Adelaide, SA, 5000

MYLOR CONSERVATION PARK



Map data ©2016 Google 5 km



Imagery ©2016 Aerometrex, CNES / Astrium, Cnes/Spot Image, DigitalGlobe, Map data ©2016 Google 200 m