



**Bird list for
NURRAGI CONSERVATION RESERVE**

-35.37659 °N 138.91608 °E
or new

35°22'36" S 138°54'58" E

54 310700 6083200

Observers:

Phone: (H) (M)

Email:

Date: Start Time: End Time:

Codes (leave blank for Present)

D = Dead	H = Heard	O = Overhead	B = Breeding	B1 = Mating
B2 = Nest Building	B3 = Nest with eggs	B4 = Nest with chicks	B5 = Dependent fledglings	B6 = Bird on nest

PASSERINES		S	S	A	W	Code No.	PASSERINES		S	S	A	W	Code No.	PASSERINES		S	S
A	W						A	W						A	W		
White-browed Babbler							Black-capped Sittella (Varied Sittella)										
*Common Blackbird							*Eurasian Skylark										
White-fronted Chat							Brown Songlark										
Black-faced Cuckooshrike							Rufous Songlark										
Grey Butcherbird							*House Sparrow										
Purple-backed Fairywren							Eastern Spinebill										
Superb Fairywren							*Common Starling										
Grey Fantail							Welcome Swallow										
Red-browed Finch							Chestnut-rumped Thornbill										
Zebra Finch							Brown Thornbill										
Diamond Firetail							Yellow Thornbill										
Restless Flycatcher							Yellow-rumped Thornbill										
Satin Flycatcher							White-throated Treecreeper										
*European Goldfinch							White-winged Triller										
Little Grassbird							Willie Wagtail										
Black-chinned Honeyeater							Little Wattlebird										
Brown-headed Honeyeater							Red Wattlebird										
Crescent Honeyeater							Weebill										
New Holland Honeyeater							Rufous Whistler										
Singing Honeyeater							Western Whistler										
Spiny-cheeked Honeyeater							Southern Whiteface										
White-eared Honeyeater							Jacky Winter										
White-fronted Honeyeater							Dusky Woodswallow										
White-naped Honeyeater							White-browed Woodswallow										
White-plumed Honeyeater																	
Yellow-faced Honeyeater																	
Yellow-plumed Honeyeater																	
Australian Magpie																	
Magpielark																	
Tree Martin																	
Noisy Miner																	
Mistletoebird																	
Spotted Pardalote																	
Striated Pardalote																	
Australian Pipit																	
Little Raven																	
Hooded Robin																	
Red-capped Robin																	
Scarlet Robin																	
White-browed Scrubwren																	
Grey Shrikethrush																	
Eastern Shriketit (Crested Shriketit)																	
Silvereye																	

If Species in **BOLD** are seen a "Rare Bird Record Report" should be submitted.

SEASONS – **Spring**: September, October, November; **Summer**: December, January, February; **Autumn**: March, April May; **Winter**: June, July, August

IT IS IMPORTANT THAT ONLY BIRDS SEEN WITHIN THE RESERVE ARE RECORDED ON THIS LIST. IF YOU SEE BIRDS OUTSIDE THE RESERVE PLEASE MARK ACCORDINGLY OR PREFERABLY USE A SEPARATE LIST.

Please return this sheet on completion to Birds SA Database Co-ordinator (Brian Blaylock) for inclusion in the database.

Email to: database@birdssa.asn.au or post to: Birds SA Database, Birds SA c/- SA Museum, North Terrace, Adelaide, SA, 5000

NURRAGI CONSERVATION RESERVE

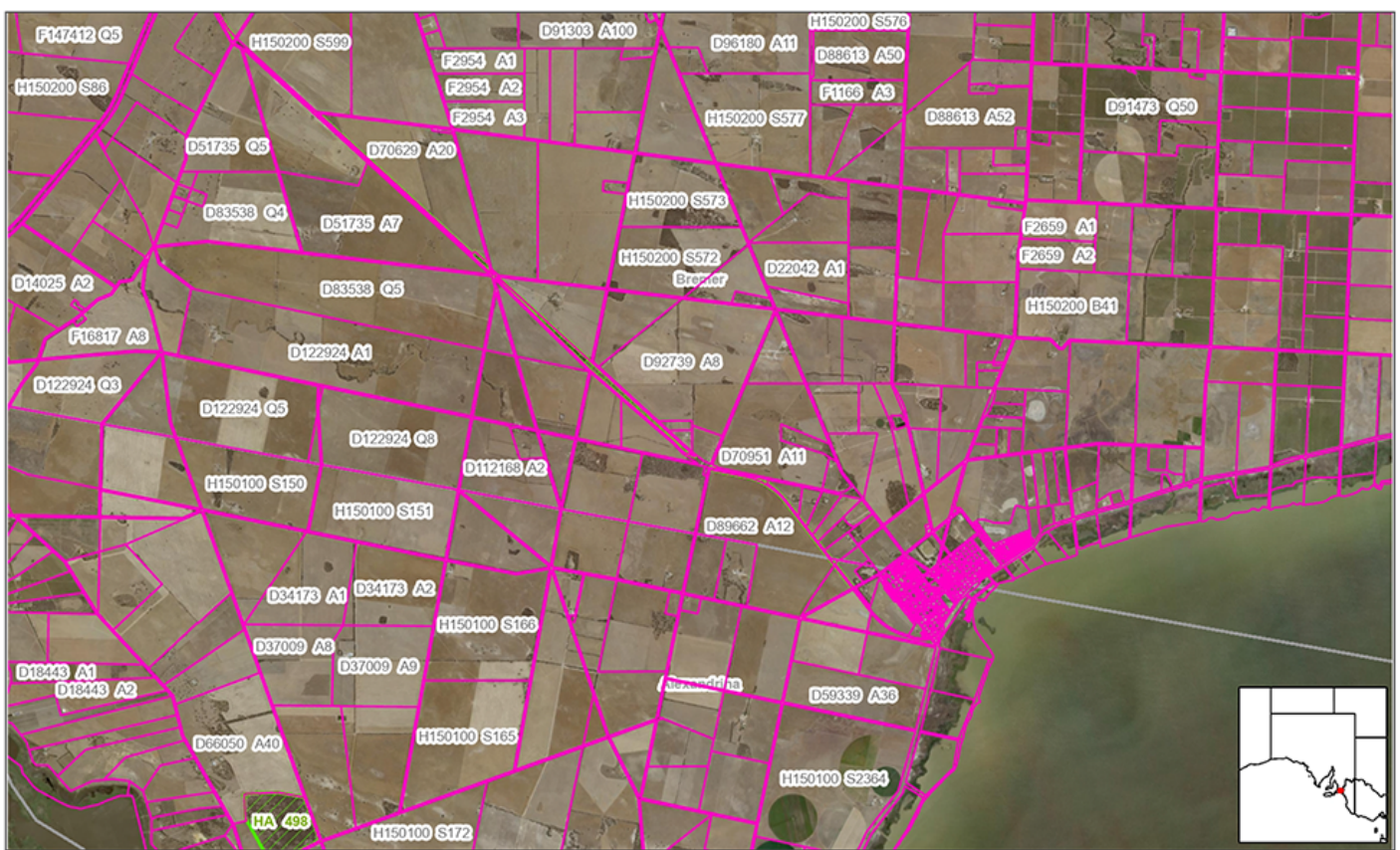


Map data is compiled from a variety of sources and hence its accuracy is variable.

Copyright © Department for Environment and Water 2021. All Rights Reserved. All works and information displayed are subject to Copyright. For the reproduction or publication beyond that permitted by the Copyright Act 1969 (Cth) written permission must be sought from the Department. Although every effort has been made to ensure the accuracy of the information displayed, the Department, its agents, officers and employees make no representations, either express or implied, that the information displayed is accurate or fit for any purpose and expressly disclaims all liability for loss or damage arising from reliance upon the information displayed.



Compiled: 21-Apr-2021
 Generated at: www.naturemaps.sa.gov.au
 Datum: Geocentric Datum of Australia, 1994
 Projection: Web Mercator (Auxiliary Sphere)



Map data is compiled from a variety of sources and hence its accuracy is variable.

Copyright © Department for Environment and Water 2021. All Rights Reserved. All works and information displayed are subject to Copyright. For the reproduction or publication beyond that permitted by the Copyright Act 1969 (Cth) written permission must be sought from the Department. Although every effort has been made to ensure the accuracy of the information displayed, the Department, its agents, officers and employees make no representations, either express or implied, that the information displayed is accurate or fit for any purpose and expressly disclaims all liability for loss or damage arising from reliance upon the information displayed.



Compiled: 21-Apr-2021
 Generated at: www.naturemaps.sa.gov.au
 Datum: Geocentric Datum of Australia, 1994
 Projection: Web Mercator (Auxiliary Sphere)

