



**Checklist for
PANDAPPA CONSERVATION PARK**

Latitude -33.17583° N Longitude 139.13722° E
 Latitude 33°10'33" S Longitude 139°08'14" E UTM 54 326329 6327664

Observers: Phone: (H) (M)
 Email:

Date: Start Time: End Time:

Codes (leave blank for Present)

D = Dead	H = Heard	O = Overhead	B = Breeding	B1 = Mating
B2 = Nest Building	B3 = Nest with eggs	B4 = Nest with chicks	B5 = Dependent fledglings	B6 = Bird on nest

NON-PASSERINES			NON-PASSERINES			PASSERINES		
	Code	No.		Code	No.		Code	No.
Emu			Brown Treecreeper			Maggielark		
Stubble Quail			Purple-backed Fairywren (Variegated Fairywren)			Little Crow		
Wedge-tailed Eagle			Black-backed Fairywren (Splendid Fairywren)			Little Raven		
Brown Goshawk			White-winged Fairywren			Australian Raven		
Collared Sparrowhawk			Brown-headed Honeyeater			White-winged Chough		
Nankeen Kestrel			White-eared Honeyeater			Hooded Robin		
Brown Falcon			White-fronted Chat			Jacky Winter		
Banded Lapwing			Orange Chat			Red-capped Robin		
Common Bronzewing			Crimson Chat			Welcome Swallow		
Crested Pigeon			Spiny-cheeked Honeyeater			Tree Martin		
Horsfield's Bronze Cuckoo			Red Wattlebird			Silvereye		
Black-eared Cuckoo			Purple-gaped Honeyeater			*Common Starling		
Pallid Cuckoo			Yellow-throated Miner			Australian Pipit		
Southern Boobook			White-fronted Honeyeater			Zebra Finch		
Tawny Frogmouth			Singing Honeyeater					
Spotted Nightjar			Yellow-plumed Honeyeater					
Australian Owllet-nightjar			White-plumed Honeyeater					
Red-backed Kingfisher			Spotted Pardalote					
Rainbow Bee-eater			Striated Pardalote					
Galah			Redthroat					
Cockatiel			Weebill					
Red-rumped Parrot			Inland Thornbill					
Eastern Bluebonnet			Chestnut-rumped Thornbill					
Mulga Parrot			Yellow-rumped Thornbill					
Mallee Ringneck (Australian Ringneck)			Yellow Thornbill					
Budgerigar			Southern Whiteface					
			White-browed Babbler					
			Chestnut-crowned Babbler					
			Chestnut Quailthrush					
			Masked Woodswallow					
			White-browed Woodswallow					
			Black-faced Woodswallow					
			Dusky Woodswallow					
			Grey Butcherbird					
			Australian Magpie					
			Black-winged Currawong (Grey Currawong)					
			Black-faced Cuckooshrike					
			White-winged Triller					
			Black-capped Sittella (Varied Sittella)					
			Crested Bellbird					
			Australian Golden Whistler					
			Rufous Whistler					
			Grey Shrikethrush					
			Willie Wagtail					
			Grey Fantail					

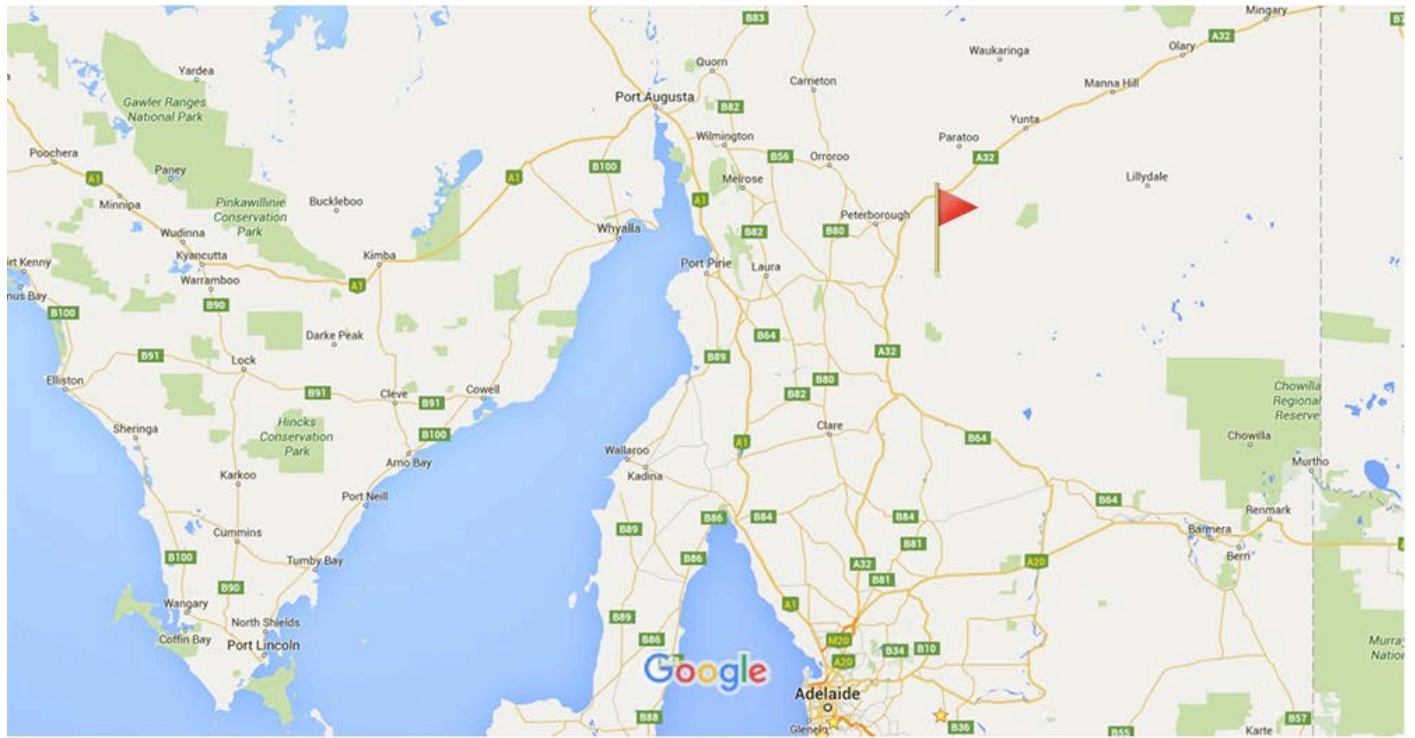
If Species in **BOLD** are seen a "Rare Bird Record Report" should be submitted.

IT IS IMPORTANT THAT ONLY BIRDS SEEN WITHIN THE PARK ARE RECORDED ON THIS LIST. IF YOU SEE BIRDS OUTSIDE THE PARK PLEASE MARK ACCORDINGLY OR PREFERABLY USE A SEPARATE LIST.

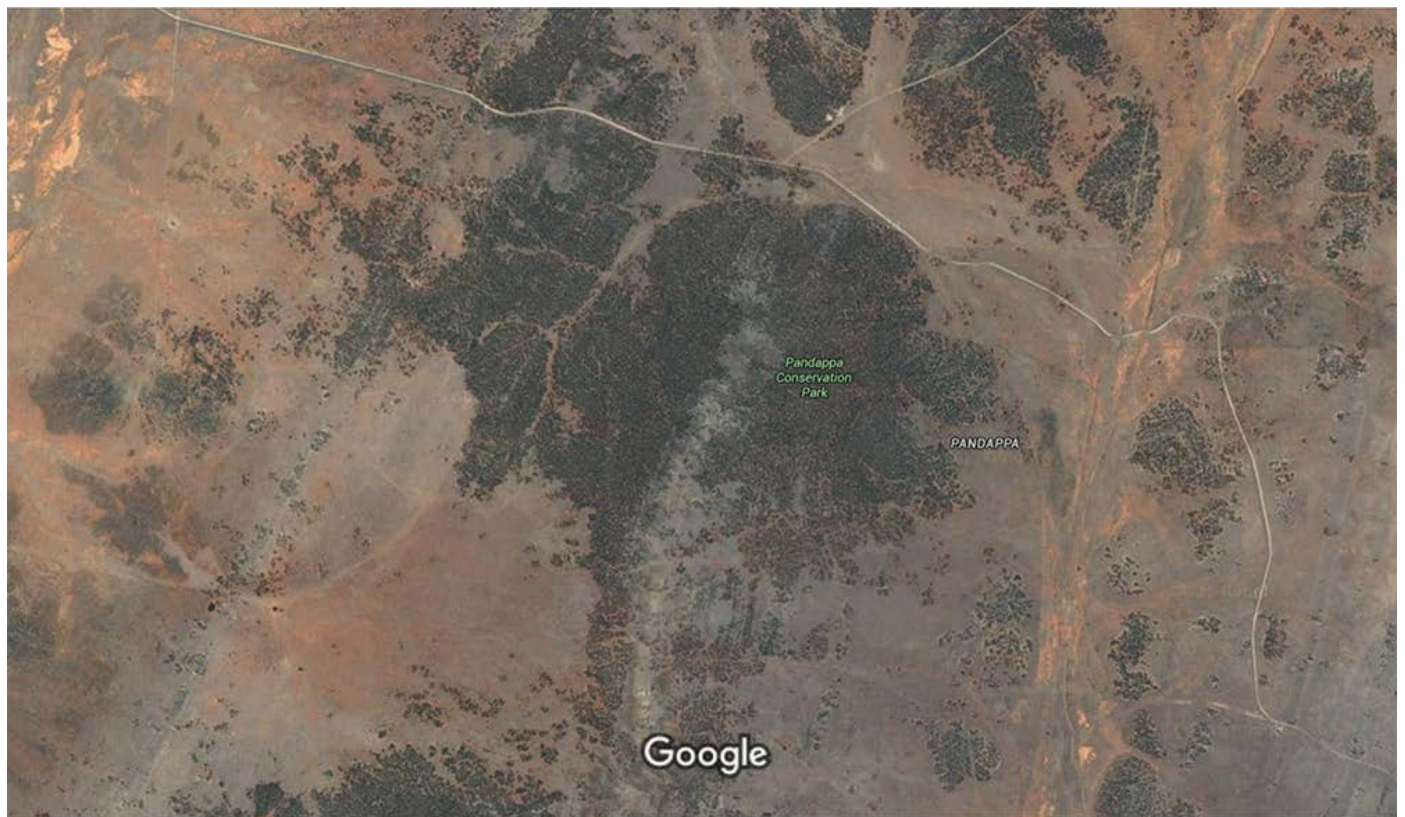
Please return this sheet on completion to Birds SA Database Co-ordinator (Brian Blaylock) for inclusion in the database.

Email to: secretary@birdssa.asn.au or post to: Birds SA c/- SA Museum, North Terrace, Adelaide, SA, 5000

PANDAPPA CONSERVATION PARK



Map data ©2016 Google 50 km



Imagery ©2016 CNES / Astrium, Cnes/Spot Image, DigitalGlobe, Landsat, Map data ©2016 Google 500 m