



**Checklist for  
PENAMBOL CONSERVATION PARK**

**-37.96902 °N 40.87899 °E**  
or new  
.....

37°58'08" S 140°52'44" E  
.....

54 489371 5797615  
.....

Observers: .....  
.....

Phone: (H) ..... (M) .....  
Email: .....

Date: ..... Start Time: ..... End Time: .....

**Codes (leave blank for Present)**

<b>D = Dead</b>	<b>H = Heard</b>	<b>O = Overhead</b>	<b>B = Breeding</b>	<b>B1 = Mating</b>
<b>B2 = Nest Building</b>	<b>B3 = Nest with eggs</b>	<b>B4 = Nest with chicks</b>	<b>B5 = Dependent fledglings</b>	<b>B6 = Bird on nest</b>

NON-PASSERINES			PASSERINES			PASSERINES		
	Code	No.		Code	No.		Code	No.
Emu			White-throated Treecreeper					
Australian Shelduck			Superb Fairywren					
Wedge-tailed Eagle			Eastern Spinebill					
Common Bronzewing			New Holland Honeyeater					
Brush Bronzewing			White-naped Honeyeater					
Horsfield's Bronze Cuckoo			White-eared Honeyeater					
Shining Bronze Cuckoo			Spiny-cheeked Honeyeater					
Pallid Cuckoo			Little Wattlebird					
Fan-tailed Cuckoo			Red Wattlebird					
White-throated Needletail			Yellow-faced Honeyeater					
<b>Gang-gang Cockatoo</b>			Spotted Pardalote					
Galah			Striated Pardalote					
Crimson Rosella			Striated Fieldwren					
Blue-winged Parrot			Brown Thornbill					
			Yellow-rumped Thornbill					
			Striated Thornbill					
			White-browed Scrubwren					
			Weebill					
			White-browed Woodswallow					
			Dusky Woodswallow					
			Grey Butcherbird					
			Australian Magpie					
			Pied Currawong					
			<b>Black-winged Currawong (Grey Currawong)</b>					
			Black-faced Cuckooshrike					
			Black-capped Sittella (Varied Sittella)					
			Australian Golden Whistler					
			Rufous Whistler					
			Grey Shrike-thrush					
			Grey Fantail					
			Little Raven					
			Forest Raven					
			White-winged Chough					
			Eastern Yellow Robin					
			Hooded Robin					
			Jacky Winter					
			Scarlet Robin					
			Silvereye					
			Welcome Swallow					
			*Common Starling					
			*Common Blackbird					
			Bassian Thrush					
			Red-browed Finch					
			Australian Pipit					
			*European Goldfinch					

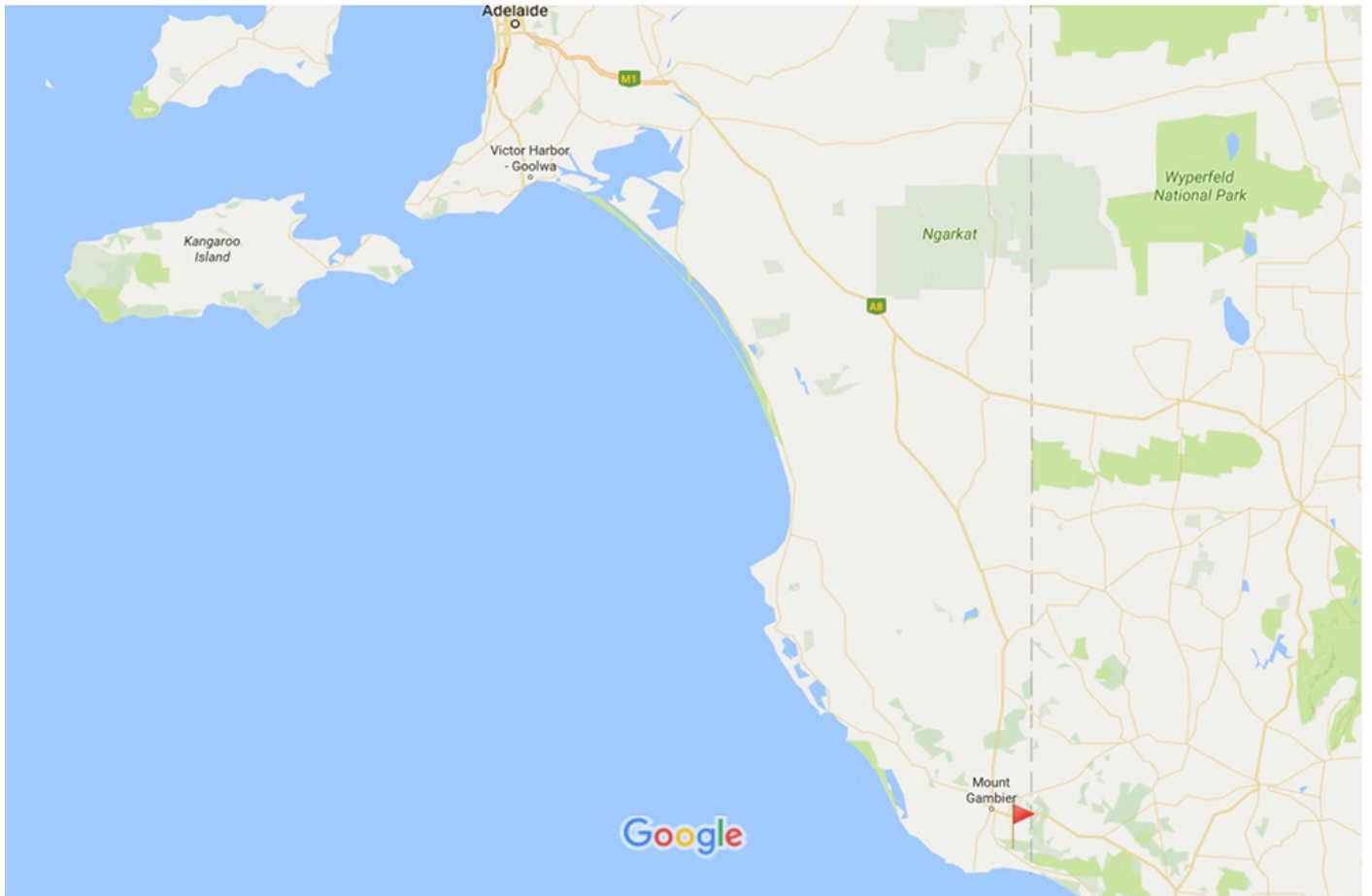
If Species in **BOLD** are seen a "Rare Bird Record Report" should be submitted.

IT IS IMPORTANT THAT ONLY BIRDS SEEN WITHIN THE PARK ARE RECORDED ON THIS LIST. IF YOU SEE BIRDS OUTSIDE THE PARK PLEASE MARK ACCORDINGLY OR PREFERABLY USE A SEPARATE LIST.

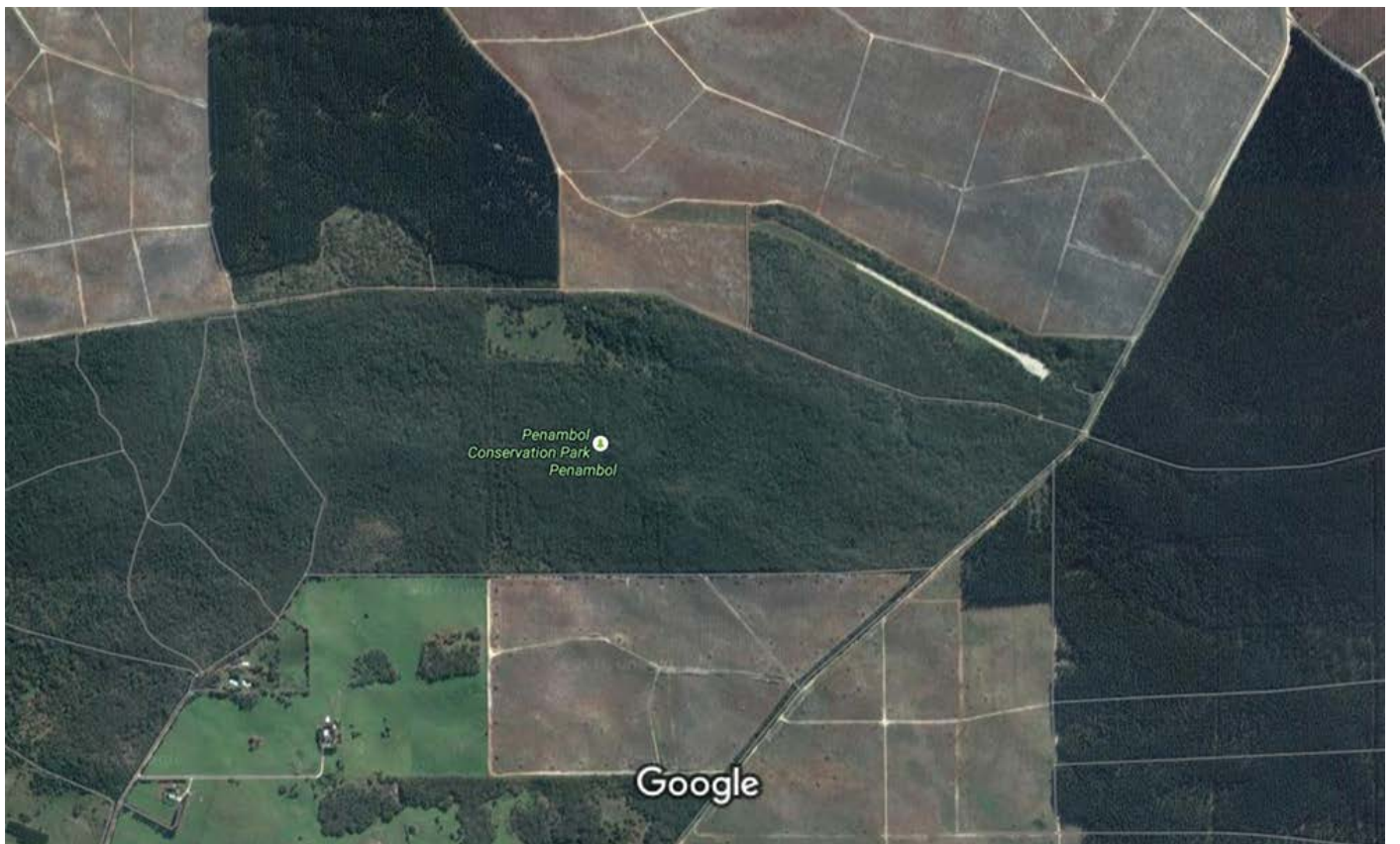
Please return this sheet on completion to Birds SA Database Co-ordinator (Brian Blaylock) for inclusion in the database.

Email to: [secretary@birdssa.asn.au](mailto:secretary@birdssa.asn.au) or post to: Birds SA c/- SA Museum, North Terrace, Adelaide, SA, 5000

# PENAMBOL CONSERVATION PARK



Map data ©2016 Google 50 km



Imagery ©2016 CNES / Astrium, Cnes/Spot Image, DigitalGlobe, Map data ©2016 Google 200 m