



**Checklist for
SPRING GULLY CONSERVATION PARK**

Latitude -33.91167 °N Longitude 138.59667 °E
 Latitude 33°54'42" S Longitude 138°35'48" E UTM 54 277803 6245037

Observers: Phone: (H) (M)
 Email:

Date: Start Time: End Time:

Codes (leave blank for Present)

D = Dead	H = Heard	O = Overhead	B = Breeding	B1 = Mating
B2 = Nest Building	B3 = Nest with eggs	B4 = Nest with chicks	B5 = Dependent fledglings	B6 = Bird on nest

NON-PASSERINES			NON-PASSERINES			PASSERINES		
	Code	No.		Code	No.		Code	No.
Maned Duck			Brown Treecreeper			Mistletoebird		
White-faced Heron			Superb Fairywren					
Stubble Quail			Tawny-crowned Honeyeater					
Australasian Grebe			Crescent Honeyeater					
White-faced Heron			Brown-headed Honeyeater					
Black-shouldered Kite			White-naped Honeyeater					
Little Eagle			Red Wattlebird					
Wedge-tailed Eagle			Yellow-faced Honeyeater					
Brown Goshawk			Noisy Miner					
Whistling Kite			Singing Honeyeater					
Painted Buttonquail			White-plumed Honeyeater					
Common Bronzewing			Spotted Pardalote					
Peaceful Dove			Striated Pardalote					
Crested Pigeon			Weebill					
Horsfield's Bronze-Cuckoo			Inland Thornbill					
Fan-tailed Cuckoo			Buff-rumped Thornbill					
Southern Boobook			Yellow-rumped Thornbill					
Tawny Frogmouth			Yellow Thornbill					
Australian Owllet-nightjar			Masked Woodswallow					
Laughing Kookaburra			White-browed Woodswallow					
Sacred Kingfisher			Dusky Woodswallow					
Red-backed Kingfisher			Australian Magpie					
Rainbow Bee-eater			Black-winged Currawong (Grey Currawong)					
Nankeen Kestrel			Black-faced Cuckooshrike					
Australian Hobby			Black-capped Sittella (Varied Sittella)					
Peregrine Falcon			Eastern Shrikeitit (Crested Shrikeitit)					
Galah			Australian Golden Whistler					
Red-rumped Parrot			Rufous Whistler					
Adelaide Rosella (Crimson Rosella)			Grey Shrikeitit					
Purple-crowned Lorikeet			Grey Fantail					
Musk Lorikeet			Magpielark					
			Restless Flycatcher					
			Little Raven					
			White-winged Chough					
			Hooded Robin					
			Flame Robin					
			Scarlet Robin					
			Red-capped Robin					
			Silvereye					
			Fairy Martin					
			Tree Martin					
			Welcome Swallow					
			*Common Starling					
			*Common Blackbird					
			*House Sparrow					

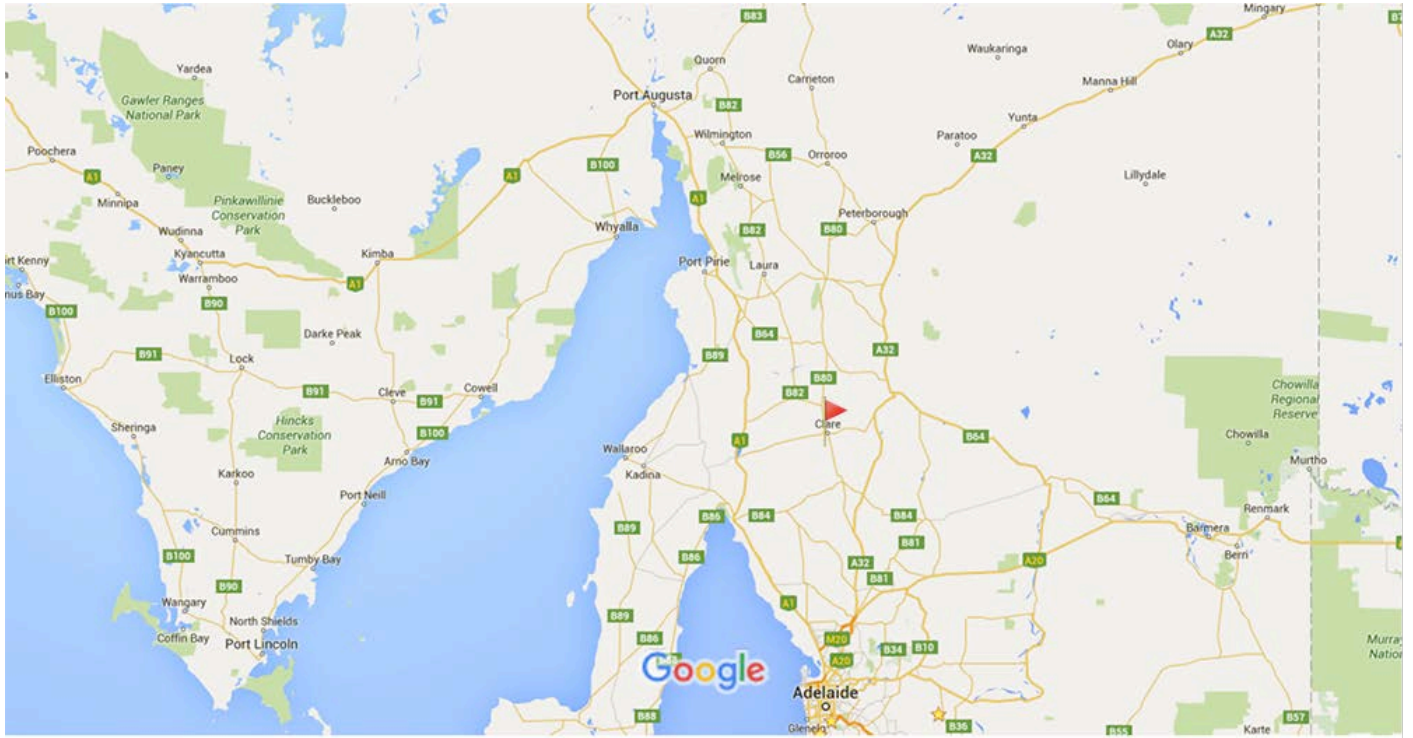
If Species in **BOLD** are seen a "Rare Bird Record Report" should be submitted.

IT IS IMPORTANT THAT ONLY BIRDS SEEN WITHIN THE PARK ARE RECORDED ON THIS LIST. IF YOU SEE BIRDS OUTSIDE THE PARK PLEASE MARK ACCORDINGLY OR PREFERABLY USE A SEPARATE LIST.

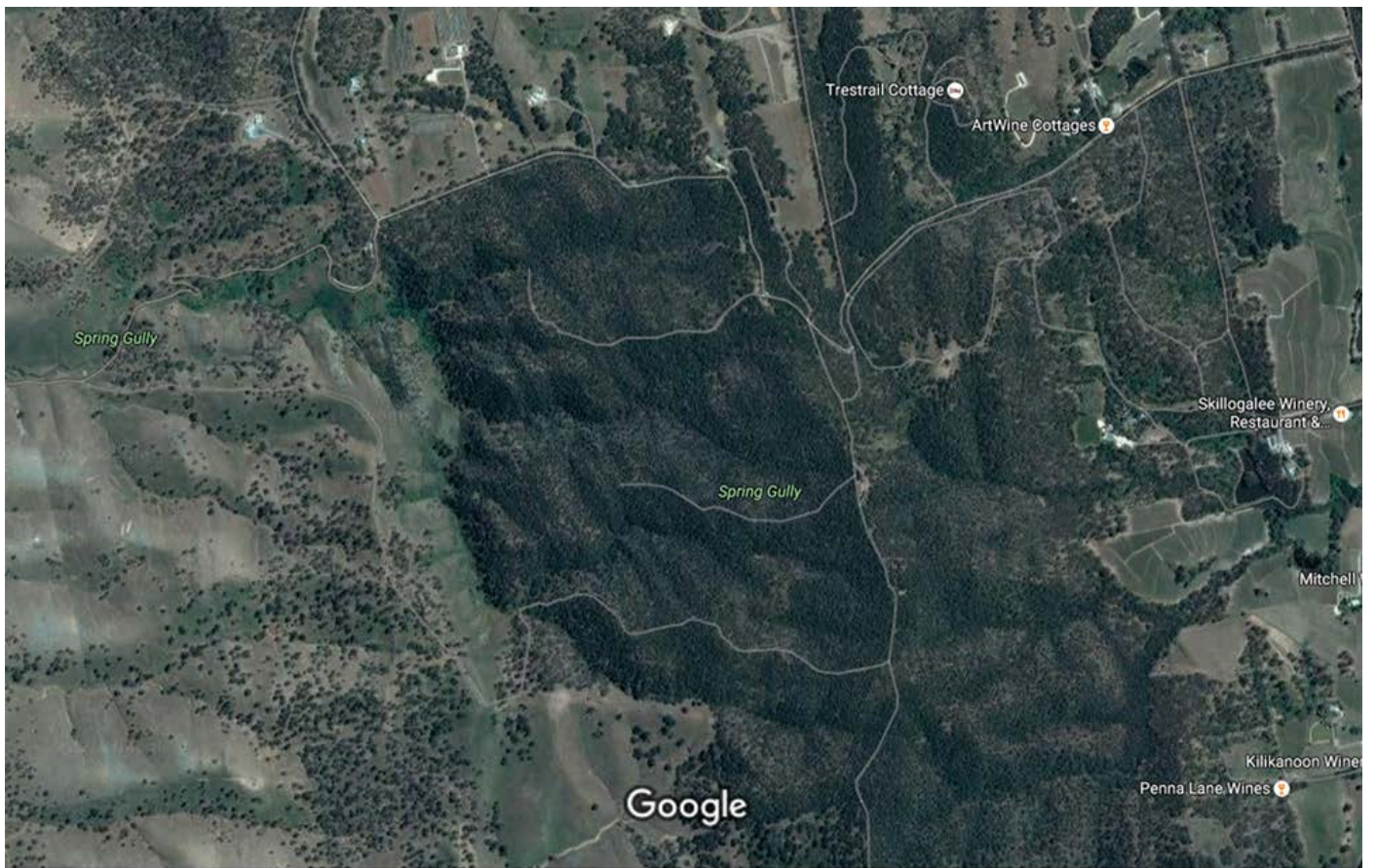
Please return this sheet on completion to Birds SA Database Co-ordinator (Brian Blaylock) for inclusion in the database.

Email to: secretary@birdssa.asn.au or post to: Birds SA c/- SA Museum, North Terrace, Adelaide, SA, 5000

SPRING GULLY CONSERVATION PARK



Map data ©2016 Google 50 km



Imagery ©2016 CNES / Astrium, Cnes/Spot Image, DigitalGlobe, Map data ©2016 Google 200 m