



**Checklist for
SPRING MOUNT CONSERVATION PARK**

Latitude -35.4473 °N Longitude 138.52893 °E
 Latitude 35°26'50" S Longitude 138°31'44" E UTM 54 275722 6074545

Observers: Phone: (H) (M)
 Email:

Date: Start Time: End Time:

Codes (leave blank for Present)

D = Dead	H = Heard	O = Overhead	B = Breeding	B1 = Mating
B2 = Nest Building	B3 = Nest with eggs	B4 = Nest with chicks	B5 = Dependent fledglings	B6 = Bird on nest

NON-PASSERINES			PASSERINES			PASSERINES		
	Code	No.		Code	No.		Code	No.
Emu			White-throated Treecreeper			*Common Starling		
Freckled Duck			Brown Treecreeper			*Common Blackbird		
Australian Shelduck			Superb Fairywren			Bassian Thrush		
Pacific Black Duck			Tawny-crowned Honeyeater			Mistletoebird		
Maned Duck			Eastern Spinebill			Red-browed Finch		
Stubble Quail			New Holland Honeyeater			Beautiful Firetail		
Australian White Ibis			Crescent Honeyeater			Australian Pipit		
Straw-necked Ibis			Brown-headed Honeyeater			*European Goldfinch		
White-faced Heron			White-naped Honeyeater					
Pied Cormorant			White-fronted Chat					
Wedge-tailed Eagle			Little Wattlebird					
Brown Goshawk			Red Wattlebird					
Buff-banded Rail			Yellow-faced Honeyeater					
Spur-winged Plover (Masked Lapwing)			White-plumed Honeyeater					
Black-fronted Dotterel			Spotted Pardalote					
Silver Gull			Striated Pardalote					
Common Bronzewing			White-browed Scrubwren					
Brush Bronzewing			Buff-rumped Thornbill					
Crested Pigeon			Brown Thornbill					
Horsfield's Bronze Cuckoo			Buff-rumped Thornbill					
Shining Bronze Cuckoo			Yellow-rumped Thornbill					
Fan-tailed Cuckoo			Striated Thornbill					
Southern Boobook			Spotted Quailthrush					
Laughing Kookaburra			Dusky Woodswallow					
Sacred Kingfisher			Australian Magpie					
Nankeen Kestrel			Black-winged Currawong (Grey Currawong)					
Brown Falcon			Black-faced Cuckooshrike					
Galah			Black-capped Sittella (Varied Sittella)					
Little Corella			Eastern Shrike-tit (Crested Shrike-tit)					
Sulphur-crested Cockatoo			Australian Golden Whistler					
Red-rumped Parrot			Rufous Whistler					
Adelaide Rosella (Crimson Rosella)			Grey Shrike-thrush					
Purple-crowned Lorikeet			Willie Wagtail					
Rainbow Lorikeet			Grey Fantail					
Elegant Parrot			Magpie-lark					
Blue-winged Parrot			Restless Flycatcher					
Elegant Parrot			Little Raven					
			Jacky Winter					
			Flame Robin					
			Scarlet Robin					
			*Eurasian Skylark					
			Silvereye					
			Fairy Martin					
			Tree Martin					
			Welcome Swallow					

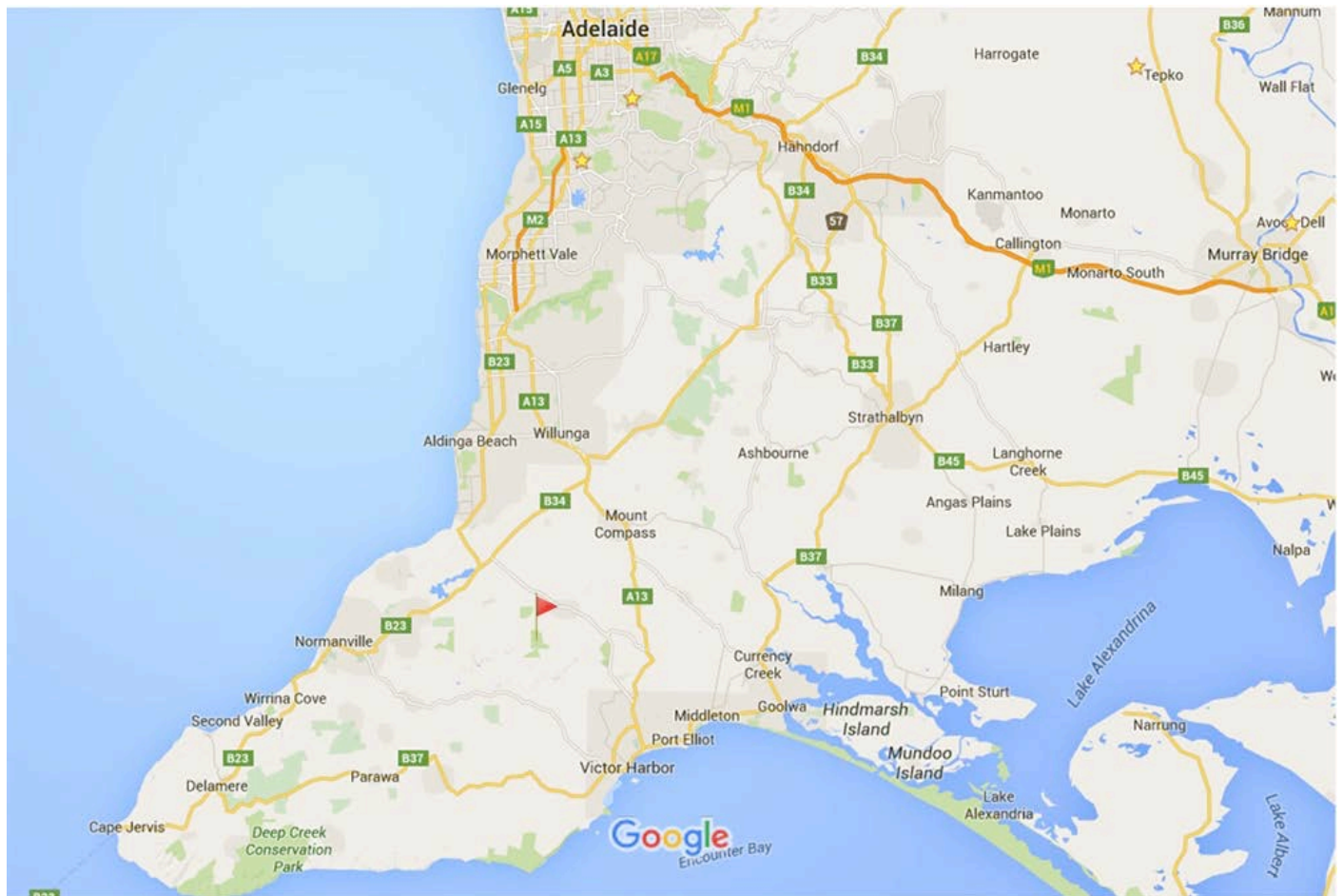
If Species in **BOLD** are seen a "Rare Bird Record Report" should be submitted.

IT IS IMPORTANT THAT ONLY BIRDS SEEN WITHIN THE PARK ARE RECORDED ON THIS LIST. IF YOU SEE BIRDS OUTSIDE THE PARK PLEASE MARK ACCORDINGLY OR PREFERABLY USE A SEPARATE LIST.

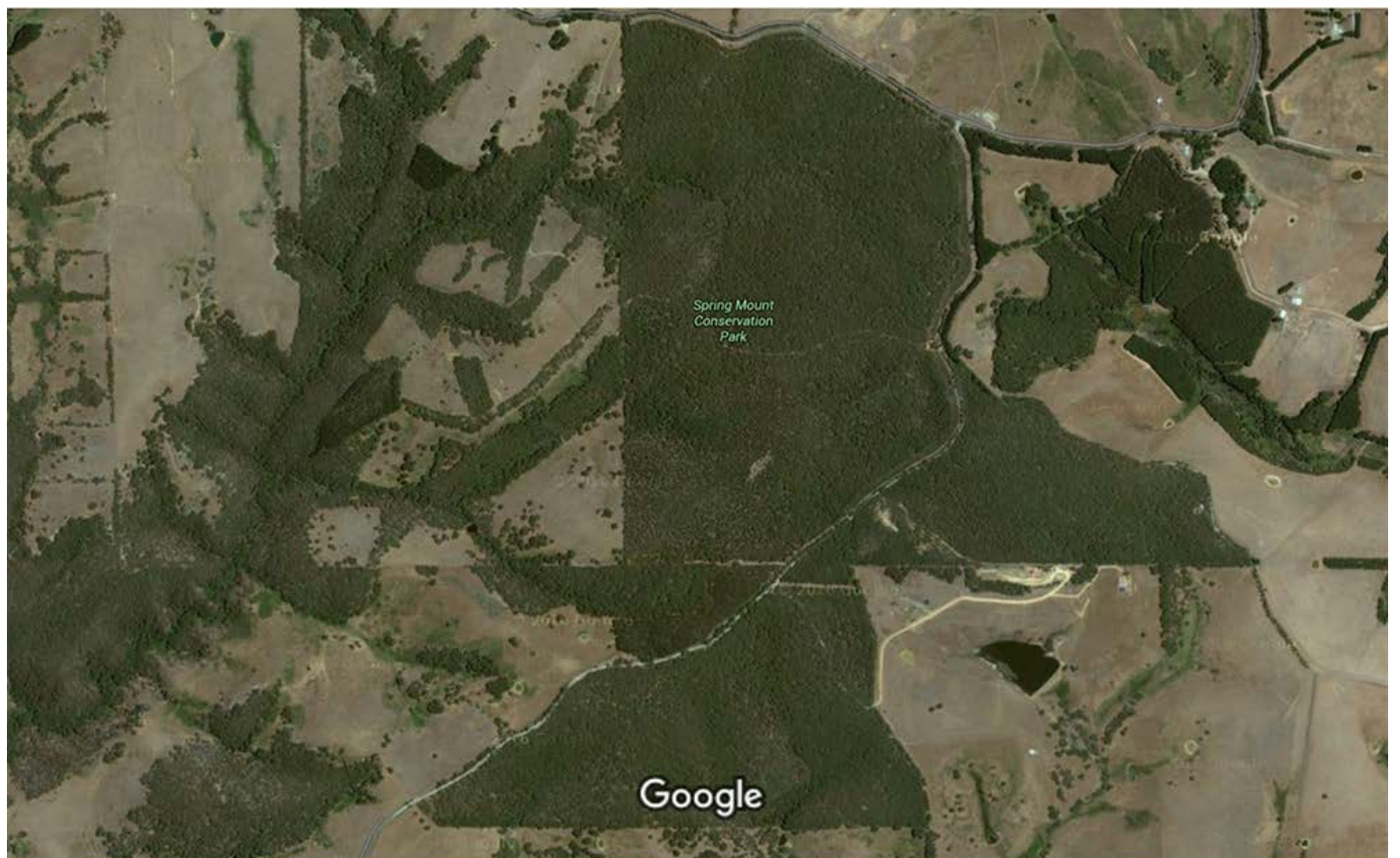
Please return this sheet on completion to Birds SA Database Co-ordinator (Brian Blaylock) for inclusion in the database.

Email to: secretary@birdssa.asn.au or post to: Birds SA c/- SA Museum, North Terrace, Adelaide, SA, 5000

SPRING MOUNT CONSERVATION PARK



Map data ©2016 Google 10 km



Imagery ©2016 CNES / Astrium, Cnes/Spot Image, DigitalGlobe, Map data ©2016 Google 200 m