 Birds SA birdssa.asn.au	Checklist for TELFORD SCRUB CONSERVATION PARK		
	-37.69809 °N 140.78583 °E or new	37°41'53" S 140°47'09" E	54 481120 5827660
Observers:	Phone: (H) (M)		
.....	Email:		
Date: Start Time: End Time:			

Codes (leave blank for Present)

D = Dead	H = Heard	O = Overhead	B = Breeding	B1 = Mating
B2 = Nest Building	B3 = Nest with eggs	B4 = Nest with chicks	B5 = Dependent fledglings	B6 = Bird on nest

NON-PASSERINES			PASSERINES			PASSERINES		
Code	No.		Code	No.		Code	No.	
		Black Swan			Red-tailed Black Cockatoo			White-browed Scrubwren
		Australian Shelduck			Yellow-tailed Black Cockatoo			Brown Thornbill
		Maned Duck			Galah			Yellow-rumped Thornbill
		Pacific Black Duck			Long-billed Corella			Striated Thornbill
		Grey Teal			Sulphur-crested Cockatoo			Masked Woodswallow
		Hardhead			Red-rumped Parrot			White-browed Woodswallow
		Stubble Quail			Crimson Rosella			Dusky Woodswallow
		Australasian Grebe			Eastern Rosella			Australian Magpie
		Australian White Ibis			Blue-winged Parrot			Pied Currawong
		Straw-necked Ibis			Musk Lorikeet			Black-winged Currawong (Grey Currawong)
		Yellow-billed Spoonbill			Rainbow Lorikeet			Black-faced Cuckooshrike
		White-necked Heron			Purple-crowned Lorikeet			White-bellied Cuckooshrike
		White-faced Heron						White-winged Triller
		Black-shouldered Kite						Black-capped Sittella (Varied Sittella)
		Little Eagle						Eastern Shrike (Crested Shrike)
		Wedge-tailed Eagle						Australian Golden Whistler
		Grey Goshawk						Grey Shrike Thrush
		Brown Goshawk						Willie Wagtail
		Swamp Harrier						Grey Fantail
		Buff-banded Rail						Maggielark
		Painted Buttonquail						Satin Flycatcher
		Grey Goshawk						Restless Flycatcher
		Brown Goshawk						Forest Raven
		Collared Sparrowhawk						Little Raven
		Swamp Harrier						Eastern Yellow Robin
		Whistling Kite						Jacky Winter
		Painted Buttonquail						Rose Robin
		Latham's Snipe						Flame Robin
		Whiskered Tern						Scarlet Robin
		Common Bronzewing						Silvereye
		Horsfield's Bronze Cuckoo						Tree Martin
		Shining Bronze Cuckoo						Welcome Swallow
		Pallid Cuckoo						*Common Starling
		Fan-tailed Cuckoo						Bassian Thrush
		Southern Boobook						*Common Blackbird
		Tawny Frogmouth						Mistletoebird
		Australian Owlet-nightjar						*House Sparrow
		White-throated Needletail						Red-browed Finch
		Fork-tailed Swift						*European Goldfinch
		Laughing Kookaburra						Australian Pipit
		Sacred Kingfisher						
		Nankeen Kestrel						
		Australian Hobby						
		Brown Falcon						
		Peregrine Falcon						

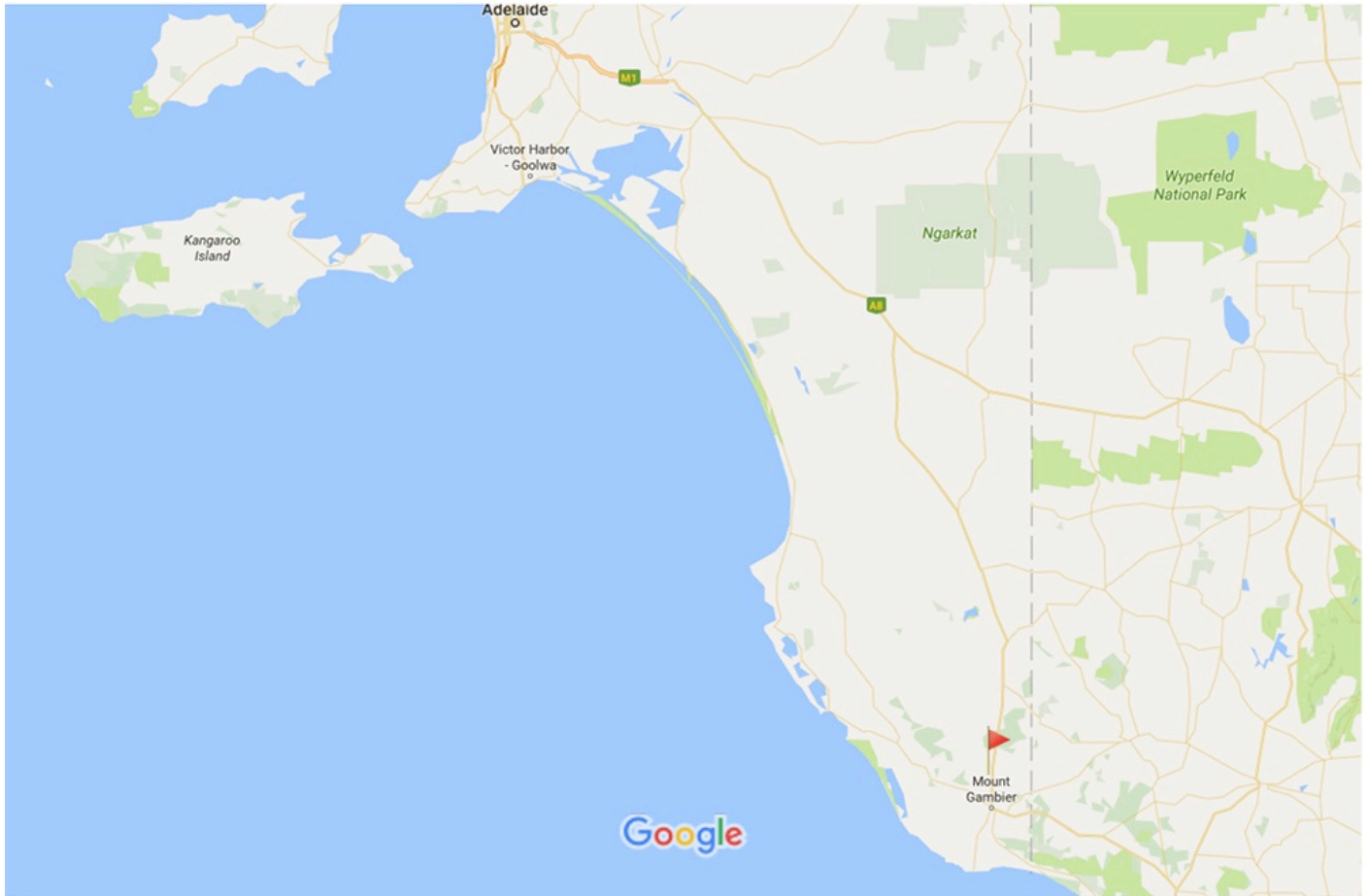
If Species in **BOLD** are seen a "Rare Bird Record Report" should be submitted.

IT IS IMPORTANT THAT ONLY BIRDS SEEN WITHIN THE PARK ARE RECORDED ON THIS LIST. IF YOU SEE BIRDS OUTSIDE THE PARK PLEASE MARK ACCORDINGLY OR PREFERABLY USE A SEPARATE LIST.

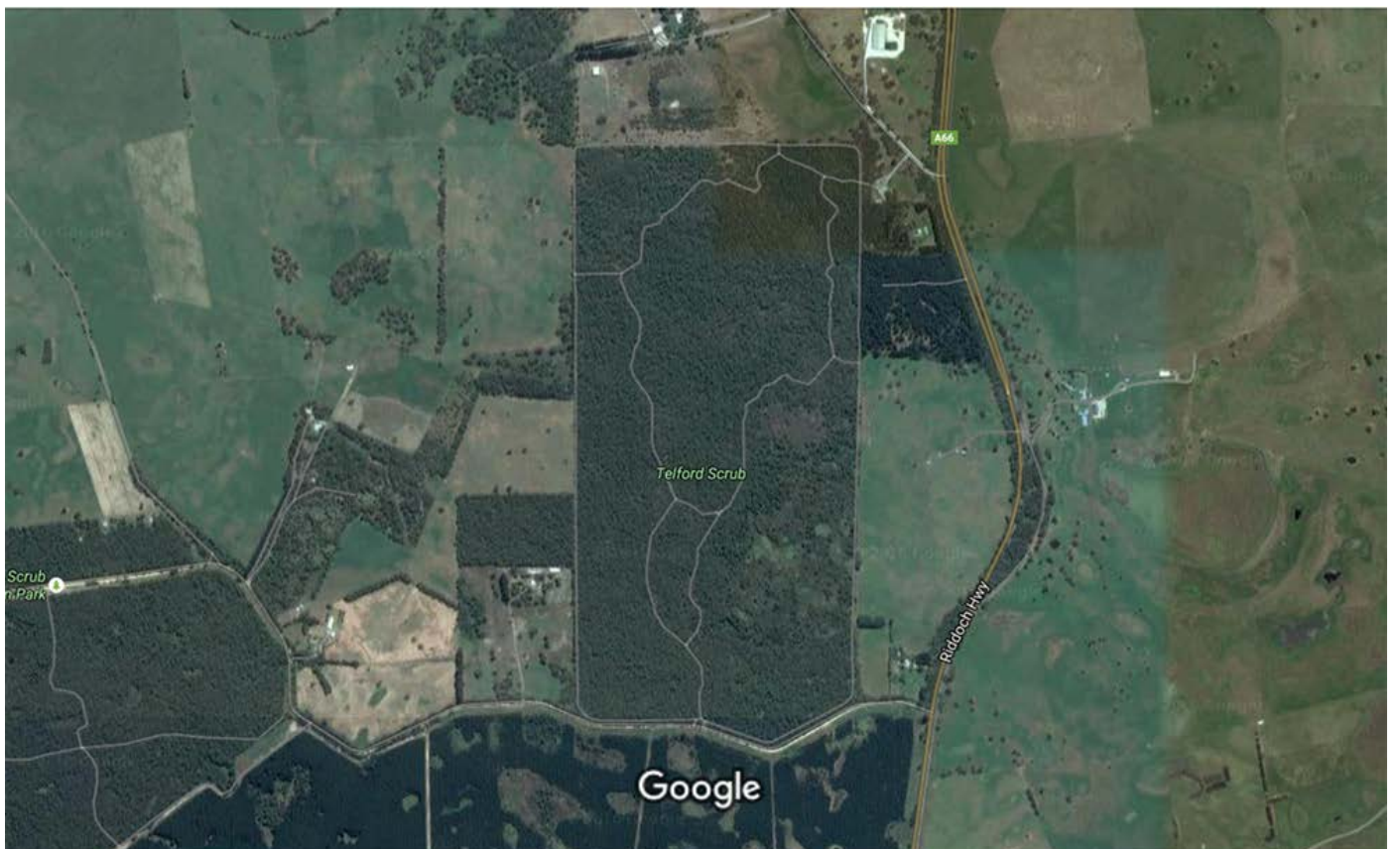
Please return this sheet on completion to Birds SA Database Co-ordinator (Brian Blaylock) for inclusion in the database.

Email to: secretary@birdssa.asn.au or post to: Birds SA c/- SA Museum, North Terrace, Adelaide, SA, 5000

TELFORD SCRUB CONSERVATION PARK



Map data ©2016 Google 50 km



Imagery ©2016 CNES / Astrium, Cnes/Spot Image, DigitalGlobe, Map data ©2016 Google 200 m