



**Checklist for
TOKUREMOAR RESERVE, GOOLWA BEACH**

Latitude -35.51591 °N Longitude 138.75325 °E

Latitude 35°30'57"S Longitude 138°45'11"E UTM 54 6067421 296258

Observers:

Phone: (H) (M)

Email:

Date: Start Time: End Time:

Codes (leave blank for Present)

D = Dead	H = Heard	O = Overhead	B = Breeding	B1 = Mating
B2 = Nest Building	B3 = Nest with eggs	B4 = Nest with chicks	B5 = Dependent fledglings	B6 = Bird on nest

NON-PASSERINES			NON-PASSERINES			PASSERINES		
Code	No.		Code	No.		Code	No.	
		Cape Barren Goose			Common Greenshank			Superb Fairywren
		Black Swan			Wood Sandpiper			New Holland Honeyeater
		Freckled Duck			Sharp-tailed Sandpiper			White-fronted Chat
		Australian Shelduck			Silver Gull			Spiny-cheeked Honeyeater
		Pink-eared Duck			Pacific Gull			Red Wattlebird
		Maned Duck			Caspian Tern			Little Wattlebird
		Pacific Black Duck			Greater Crested Tern			Singing Honeyeater
		Grey Teal			Whiskered Tern			White-plumed Honeyeater
		Chestnut Teal			*Feral Pigeon			White-browed Scrubwren
		Hardhead			*Spotted Dove			Brown Thornbill
		Blue-billed Duck			Common Bronzewing			Yellow-rumped Thornbill
		Stubble Quail			Brush Bronzewing			Yellow Thornbill
		Brown Quail			Crested Pigeon			White-browed Babbler
		Australasian Grebe			Peaceful Dove			Australian Magpie
		Hoary-headed Grebe			Horsfield's Bronze Cuckoo			Black-faced Cuckooshrike
		Australian White Ibis			Shining Bronze Cuckoo			Australian Golden Whistler
		Straw-necked Ibis			Fan-tailed Cuckoo			Rufous Whistler
		Royal Spoonbill			Australian Owlet-nightjar			Grey Shrike-thrush
		Yellow-billed Spoonbill			Pacific Swift			Willie Wagtail
		Eastern Great Egret (Great Egret)			Nankeen Kestrel			Grey Fantail
		Intermediate Egret			Australian Hobby			Magpie-lark
		White-faced Heron			Peregrine Falcon			Little Raven
		Australian Pelican			Yellow-tailed Black Cockatoo			*Eurasian Skylark
		Little Pied Cormorant			Galah			Welcome Swallow
		Little Black Cormorant			Little Corella			Tree Martin
		Pied Cormorant			Red-rumped Parrot			Australian Reed Warbler
		Great Cormorant			Adelaide Rosella (Crimson Rosella)			Little Grassbird
		Black-shouldered Kite			Elegant Parrot			Silvereye
		Brown Goshawk			Purple-crowned Lorikeet			*Common Starling
		Collared Sparrowhawk			Rainbow Lorikeet			*Common Blackbird
		Whistling Kite			Musk Lorikeet			*House Sparrow
		Swamp Harrier						Mistletoebird
		Australian Crane						Red-browed Finch
		Buff-banded Rail						Diamond Firetail
		Australasian Swamphen						Australian Pipit
		Dusky Moorhen						*European Goldfinch
		Black-tailed Nativehen						*European Greenfinch
		Eurasian Coot						
		White-headed Stilt						
		Spur-winged Plover (Masked Lapwing)						
		Black-fronted Dotterel						
		Red-kneed Dotterel						
		Latham's Snipe						
		Bar-tailed Godwit						
		Marsh Sandpiper						

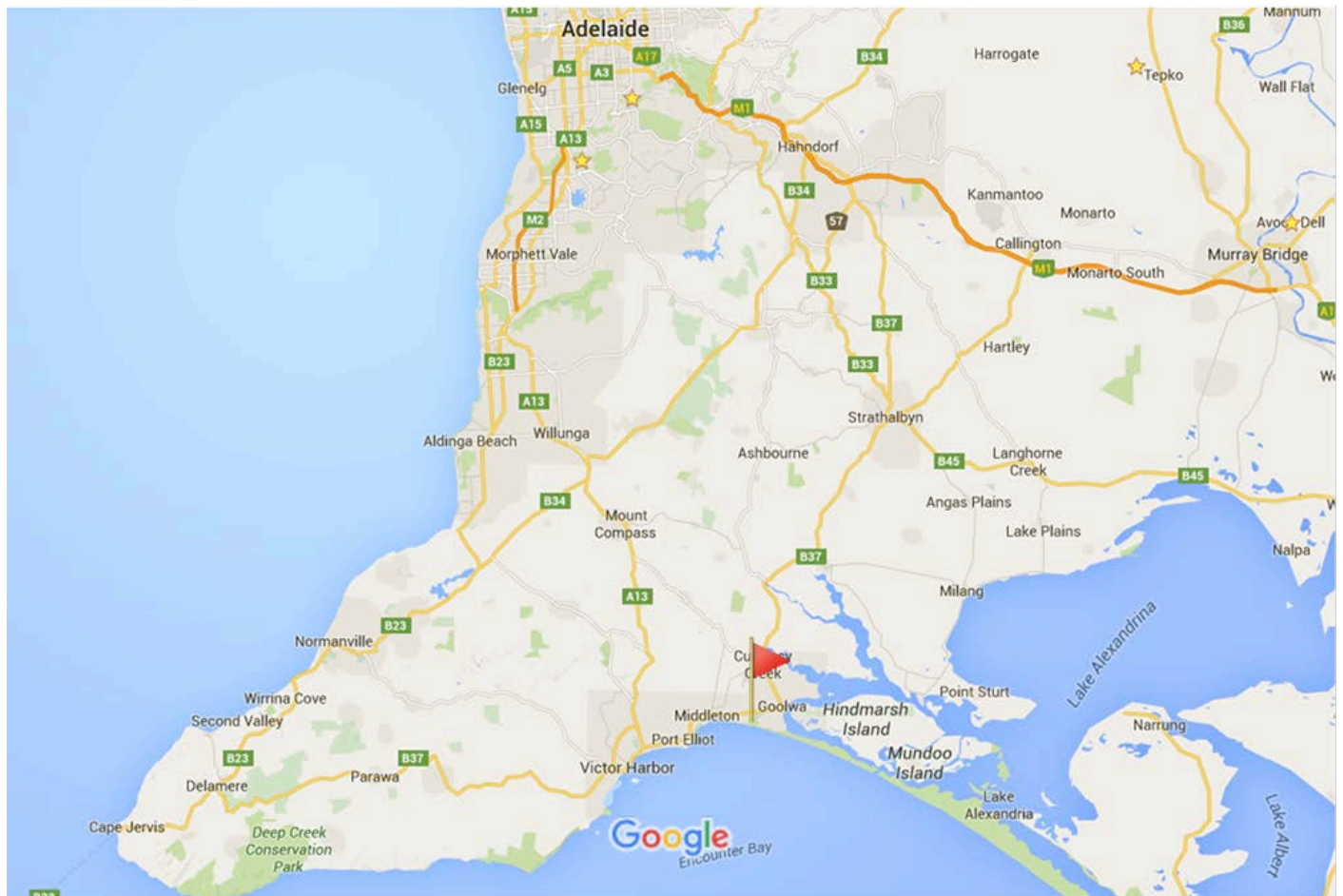
If Species in **BOLD** are seen a "Rare Bird Record Report" should be submitted.

IT IS IMPORTANT THAT ONLY BIRDS SEEN WITHIN THE PARK ARE RECORDED ON THIS LIST. IF YOU SEE BIRDS OUTSIDE THE PARK PLEASE MARK ACCORDINGLY OR PREFERABLY USE A SEPARATE LIST.

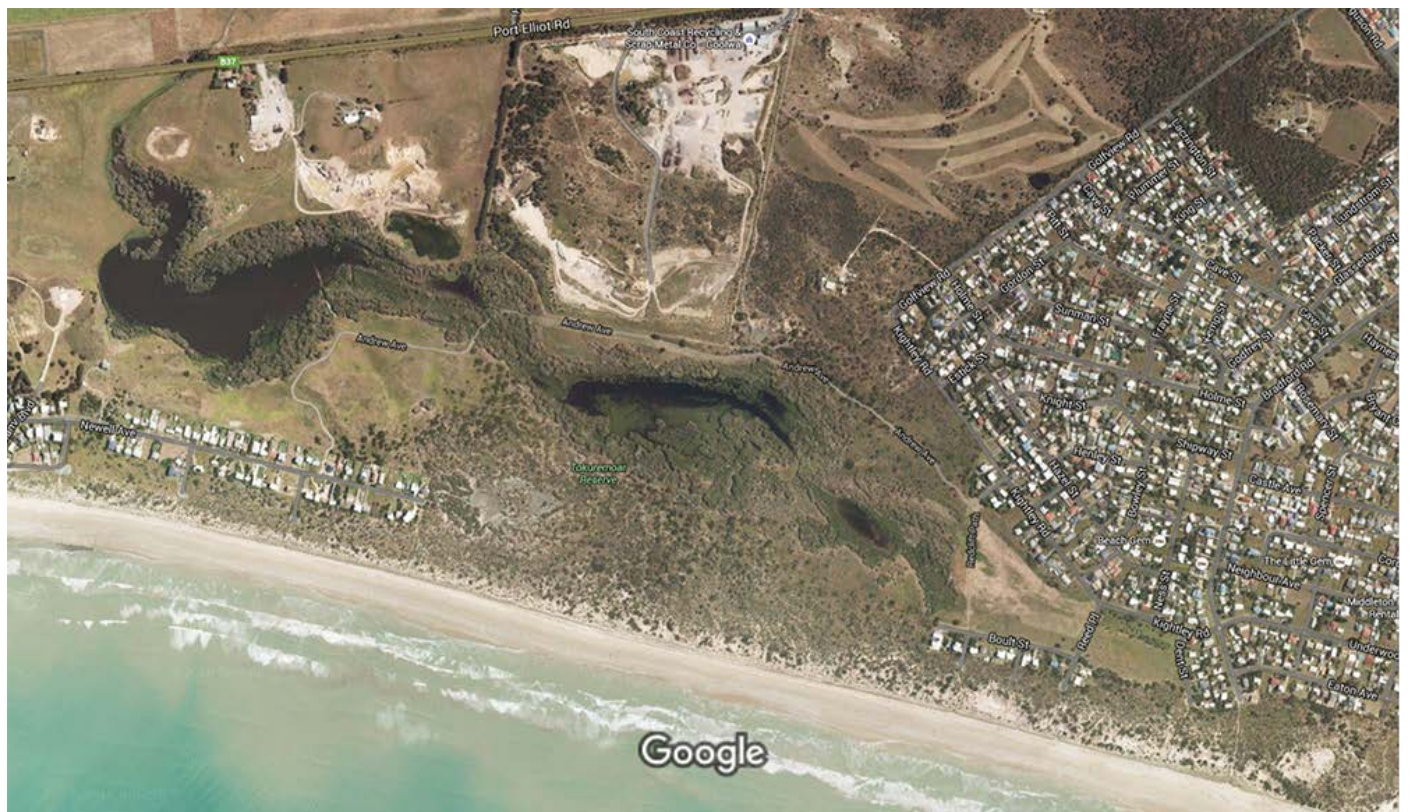
Please return this sheet on completion to Birds SA Database Co-ordinator (Brian Blaylock) for inclusion in the database.

Email to: secretary@birdssa.asn.au or post to: Birds SA c/- SA Museum, North Terrace, Adelaide, SA, 5000

TOKUREMOAR RESERVE, GOOLWA BEACH



Map data ©2016 Google 10 km



Imagery ©2016 CNES / Astrium, Cnes/Spot Image, DigitalGlobe, Fleurieu Councils/AMX, Map data ©2016 Google 200 m