



**Checklist for  
WOORABINDA RESERVE / STIRLING PARK, STIRLING**

Latitude -35.01611 N Longitude 138.71611 E  
Latitude 35°00'58" S Longitude 138°42'58" E UTM 54 291613 6122786

Observers: .....	Phone: .....	Date: .....
.....	Email: .....	.....

**Codes (leave blank for Present)**

<b>D = Dead</b>	<b>H = Heard</b>	<b>O = Overhead</b>	<b>B = Breeding</b>	<b>B1 = Mating</b>
<b>B2 = Nest Building</b>	<b>B3 = Nest with eggs</b>	<b>B4 = Nest with chicks</b>	<b>B5 = Dependent fledglings</b>	<b>B6 = Bird on nest</b>

**NON-PASSERINES**

**No.**

**NON-PASSERINES**

**No.**

**PASSERINES**

**No.**

	<b>No.</b>		<b>No.</b>		<b>No.</b>
Freckled Duck				White-throated Treecreeper	
Mened Duck				Superb Fairywren	
Pacific Black Duck				Eastern Spinebill	
Pacific Black Duck x *Mallard				New Holland Honeyeater	
Hardhead				Red Wattlebird	
Grey Teal				Yellow-faced Honeyeater	
Australasian Grebe				Crescent Honeyeater	
Australian White Ibis				White-throated Gerygone	
Nankeen Night Heron				Striated Pardalote	
White-necked Heron				Brown Thornbill	
White-faced Heron				Striated Thornbill	
Great Egret				Australian Magpie	
Little Pied Cormorant				<b>Black-winged Currawong (Grey Currawong)</b>	
Little Black Cormorant				Black-faced Cuckooshrike	
Great Cormorant				Australian Golden Whistler	
Wedge-tailed Eagle				Rufous Whistler	
Brown Goshawk				Grey Shrike-thrush	
Buff-banded Rail				Grey Fantail	
Baillon's Crake				Magpie-lark	
Australian Crake				Little Raven	
Spotless Crake				Scarlet Robin	
Australasian Swamphen				Welcome Swallow	
Dusky Moorhen				Australian Reed Warbler	
Eurasian Coot				Silvereye	
Painted Buttonquail				*Common	
*Feral Pigeon				*Common Blackbird	
*Spotted Dove				Bassian Thrush	
Common Bronzewing				*House Sparrow	
Crested Pigeon				Red-browed Finch	
Shining Bronze Cuckoo					
Fan-tailed Cuckoo					
White-throated Needletail					
Laughing Kookaburra					
Sacred Kingfisher					
Galah					
Sulphur-crested Cockatoo					
Adelaide Rosella (Crimson Rosella)					
Rainbow Lorikeet					

If Species in **BOLD** are seen a "Rare Bird Record Report" should be submitted.

IT IS IMPORTANT THAT ONLY BIRDS SEEN WITHIN THE RESERVE ARE RECORDED ON THIS LIST. IF YOU SEE BIRDS OUTSIDE THE RESERVE PLEASE MARK ACCORDINGLY OR PREFERABLY USE A SEPARATE LIST.

**Please return this sheet on completion to Birds SA Database Co-ordinator (Brian Blaylock) for inclusion in the database.**

**Email to: [secretary@birdssa.asn.au](mailto:secretary@birdssa.asn.au) or post to: Birds SA c/- SA Museum, North Terrace, Adelaide, SA, 5000**



**Checklist for  
HENDER RESERVE, STIRLING**

**Latitude** -35.01676 °N **Longitude** 138.71204 °E  
 Latitude 35°01'00" S **Longitude** 138°42'43" E **UTM** 54 291244 6122706

Observers: .....

Phone: .....

Date: .....

Email: .....

**Codes (leave blank for Present)**

<b>D = Dead</b>	<b>H = Heard</b>	<b>O = Overhead</b>	<b>B = Breeding</b>	<b>B1 = Mating</b>
<b>B2 = Nest Building</b>	<b>B3 = Nest with eggs</b>	<b>B4 = Nest with chicks</b>	<b>B5 = Dependent fledglings</b>	<b>B6 = Bird on nest</b>

NON-PASSERINES	No.	NON-PASSERINES	No.	PASSERINES	No.
Mened Duck				White-throated Treecreeper	
Pacific Black Duck				Superb Fairywren	
Common Bronzewing				Eastern Spinebill	
Crested Pigeon				New Holland Honeyeater	
Fan-tailed Cuckoo				White-naped Honeyeater	
Laughing Kookaburra				Red Wattlebird	
Sacred Kingfisher				Yellow-faced Honeyeater	
Galah				Crescent Honeyeater	
Sulphur-crested Cockatoo				Striated Pardalote	
Adelaide Rosella (Crimson Rosella)				White-throated Scrubwren	
Musk Lorikeet				White-throated Gerygone	
Rainbow Lorikeet				Brown Thornbill	
				Striated Thornbill	
				Australian Magpie	
				Black-winged Currawong (Grey Currawong)	
				Black-faced Cuckooshrike	
				Black-capped Sittella (Varied Sittella)	
				Australian Golden Whistler	
				Grey Shrikethrush	
				Grey Fantail	
				Little Raven	
				Scarlet Robin	
				Silvereye	
				*Common Blackbird	
				Red-browed Finch	

If Species in **BOLD** are seen a "Rare Bird Record Report" should be submitted.

IT IS IMPORTANT THAT ONLY BIRDS SEEN WITHIN THE RESERVE ARE RECORDED ON THIS LIST. IF YOU SEE BIRDS OUTSIDE THE RESERVE PLEASE MARK ACCORDINGLY OR PREFERABLY USE A SEPARATE LIST.

Please return this sheet on completion to Birds SA Database Co-ordinator (Brian Blaylock) for inclusion in the database.

Email to: [secretary@birdssa.asn.au](mailto:secretary@birdssa.asn.au) or post to: Birds SA c/- SA Museum, North Terrace, Adelaide, SA, 5000



**Checklist for  
MADURTA RESERVE, STIRLING**

**Latitude -35.01897 N Longitude 138.72061 E**  
Latitude 35°01'08" S Longitude 138°43'14" E UTM 54 292031 6122479

Observers: .....

Phone: .....

Date: .....

.....

Email: .....

.....

**Codes (leave blank for Present)**

<b>D = Dead</b>	<b>H = Heard</b>	<b>O = Overhead</b>	<b>B = Breeding</b>	<b>B1 = Mating</b>
<b>B2 = Nest Building</b>	<b>B3 = Nest with eggs</b>	<b>B4 = Nest with chicks</b>	<b>B5 = Dependent fledglings</b>	<b>B6 = Bird on nest</b>

**NON-PASSERINES** No.

**NON-PASSERINES** No.

**PASSERINES** No.

Mened Duck	
Pacific Black Duck	
Common Bronzewing	
Tawny Frogmouth	
Laughing Kookaburra	
Galah	
Adelaide Rosella (Crimson Rosella)	
Rainbow Lorikeet	


White-throated Treecreeper	
Superb Fairywren	
Eastern Spinebill	
Red Wattlebird	
Yellow-faced Honeyeater	
Crescent Honeyeater	
White-throated Gerygone	
Striated Pardalote	
Brown Thornbill	
Striated Thornbill	
Australian Magpie	
Black-winged Currawong (Grey Currawong)	
Black-faced Cuckoo-shrike	
Australian Golden Whistler	
Rufous Whistler	
Grey Shrike Thrush	
Grey Fantail	
Magpie Lark	
Little Raven	
Scarlet Robin	
Welcome Swallow	
Australian Reed Warbler	
Silveryeye	
*Common Blackbird	
Bassian Thrush	
*House Sparrow	
Red-browed Finch	

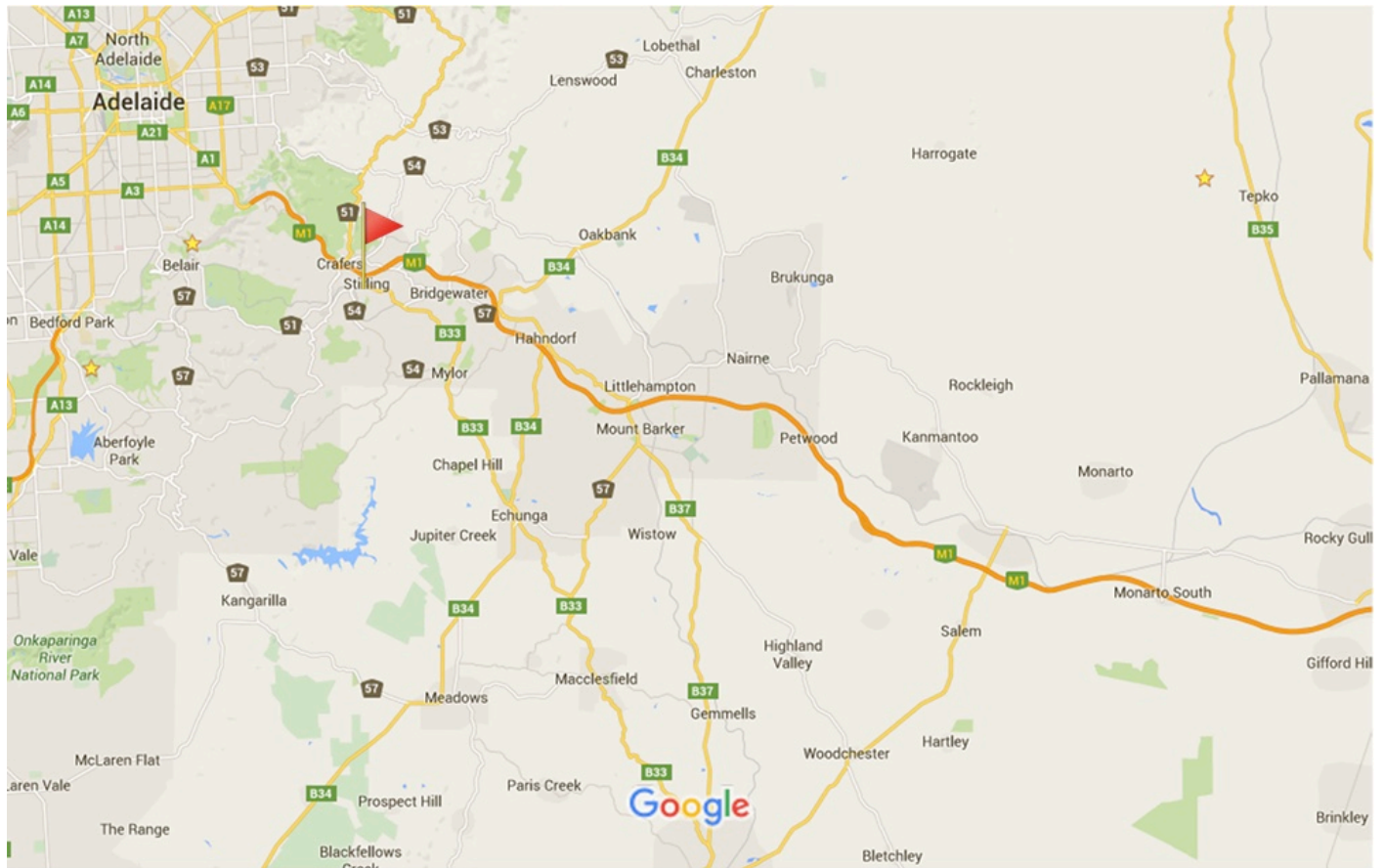
If Species in **BOLD** are seen a "Rare Bird Record Report" should be submitted.

IT IS IMPORTANT THAT ONLY BIRDS SEEN WITHIN THE RESERVE ARE RECORDED ON THIS LIST. IF YOU SEE BIRDS OUTSIDE THE RESERVE PLEASE MARK ACCORDINGLY OR PREFERABLY USE A SEPARATE LIST.

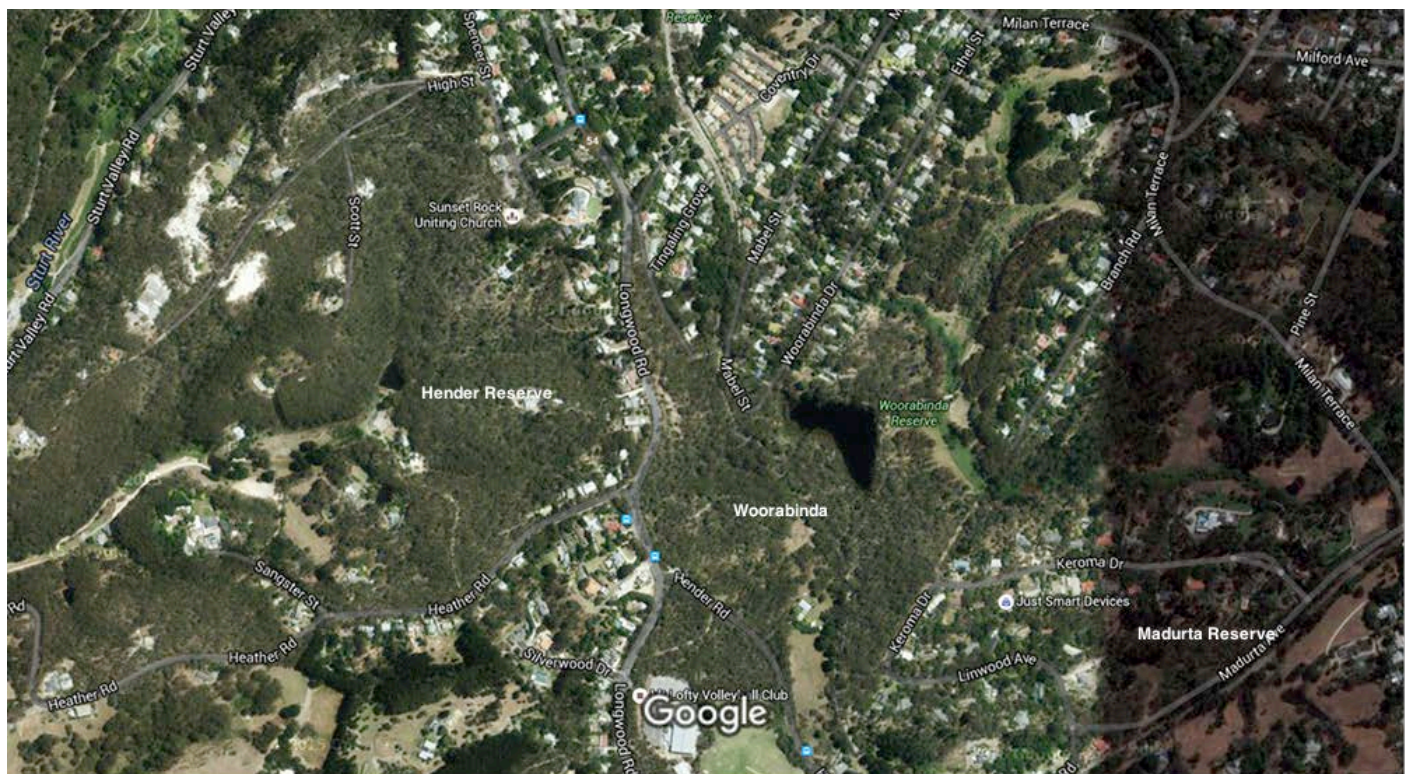
Please return this sheet on completion to **Birds SA Database Co-ordinator (Brian Blaylock)** for inclusion in the database.

Email to: [secretary@birdssa.asn.au](mailto:secretary@birdssa.asn.au) or post to: **Birds SA c/- SA Museum, North Terrace, Adelaide, SA, 5000**

# WOORABINDA RESERVES, STIRLING



Map data ©2016 Google 5 km



Imagery ©2016 Aerometrex, CNES / Astrium, Cnes/Spot Image, DigitalGlobe, Map data ©2016 Google 200 m